



University of Rochester Expands Laser Laboratory on to Wetlands

The Project:

- 81,000 SF addition to the Laser Laboratory for Energetics

Costs:

- \$20 million for construction
- \$80 million for equipment by DOE

Schedule:

- Funding approved by DOE January 2003
- Required completion December 2004
- Therefore construction start of July 2003 has no room for delays in permit approvals



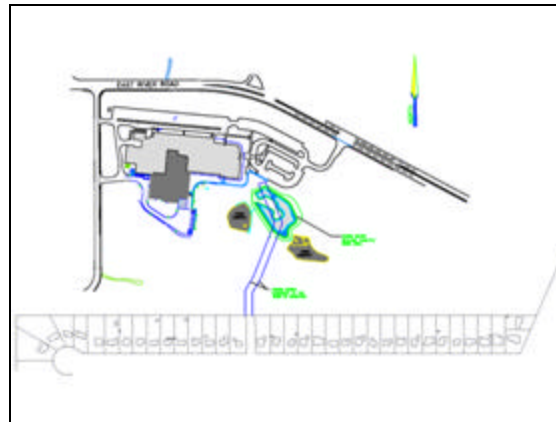
Save the Western Chorus Frogs

- Initial environmental audit showed no rare plant or animal species
- Town's conservation board alerts the University that the Western Chorus Frog – a restricted species inhabits the Laser Lab site in a vernal pond
- University commits to relocating the frog pond



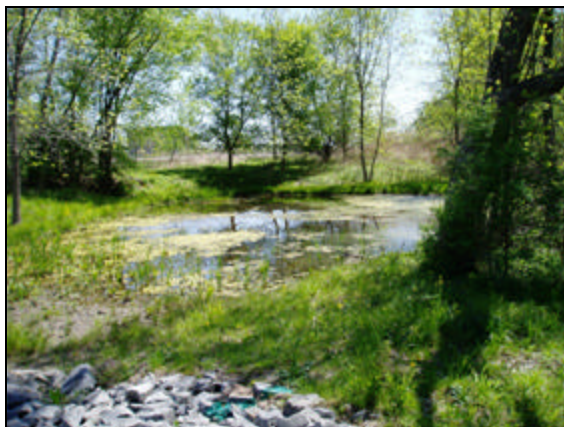
Solution: Build New Frog Ponds & Pray the Frogs Would Return

- Wetland areas
 - Non-jurisdictional federal/state
 - Total area 1.6 acres
 - After development 2.6 acres of wetland type area
- Frog pond habitat
 - Selective tree removal - sunlight
 - Depth 0-18"
 - Deep areas (holes) 36"
 - Restore with wetland soils 4" minimum
 - Vertical separation between SWWF and frog habitat
 - Habitat A = 16,000 SF
 - Habitat B = 4,500 SF
- Storm water wetland facility (SWWF)
 - 1.2 acres to handle water runoff and quality issues, first flush
 - Wetland fringe 0-18"
 - Open water 18" to 8'









Tiny frogs find new home at UR

■ Cooperation on pond project shows it can be easy being green.

CORYDON INGLAND
our writer

For one community of marshland frogs in Brighton, 2004 was literally a leap year.

In late March, western chorus frogs successfully leaped from their old habitat off East River Road to a new one created for them less than 100 yards away.

Their original home, a marshy wooded area called a vernal pond, was leveled last year during a \$20 million project to expand the University of Rochester's laser lab, formally known as the Center for Optoelectronics and Imaging.

The old pond's footprint is now under a massive brick structure that will house precision targets for laser beams. It's part of a sophisticated project to heat and compress common elements found in

semiconductors in order to create faster energy.

Near the very new is the very old.

Vernal ponds, as ancient as time, are a kind of temporary wetland — wet during late winter and spring, dry by late summer. They can be the size of pool puddles or cover hundreds of acres.

At the laser lab, a score's show from the Erie Canal, the new pond is the same size as the old — 16,000 square feet.

A second man-made pond nearby of 6,500 square feet is an attempt to mimic the moist, grassy area that western chorus frogs sometimes also use as a habitat.

Both ponds include a design feature vital to the definition of a vernal pond: no

The western chorus frog

Western chorus frogs, having habitat in North America, are safe for a while in Brighton. A few things worth knowing:

- **Appearance:** Tan to brown, with longitudinal darker stripes.
- **Average length:** 1 inch.
- **Breeding season:** Late February to early May.
- **Timeline:** Emerges in June or July.
- **Singing:** One of the first amphibians active in early spring, with mating calls typically beginning in March.



FROGS, PAGE B-6

