

An aerial photograph of the Princeton University campus, overlaid with a semi-transparent architectural plan. The plan uses various colors to delineate different zones: green for open spaces and lawns, yellow for building footprints, red for parking lots, and blue for water bodies like the Reservoir. The map shows the layout of buildings, roads, and green spaces across the campus.

CONNECTING DIVERSE PIECES IN THE PRINCETON FABRIC

**Jon Hlafter, FAIA, AUA
University Architect Emeritus
Princeton University**

**Association of University Architects
June 2008**

An aerial photograph of the Whitman College campus in Walla Walla, Washington. The map is overlaid with various colored zones and patterns, likely representing different land use or planning categories. These include green areas for parks or open space, yellow and orange areas for residential or commercial development, red hatched areas for industrial or high-density use, and blue areas for water bodies like the Walla Walla River. The text 'A CASE OF MIXED SIGNALS' is prominently displayed in the upper center of the image.

A CASE OF MIXED SIGNALS

WHITMAN COLLEGE

LEWIS SCIENCE LIBRARY



Grove Quadrangle, Magdalen College, Oxford

Porphyrios Associates



Whitman College, Princeton University

Porphyrrios Associates



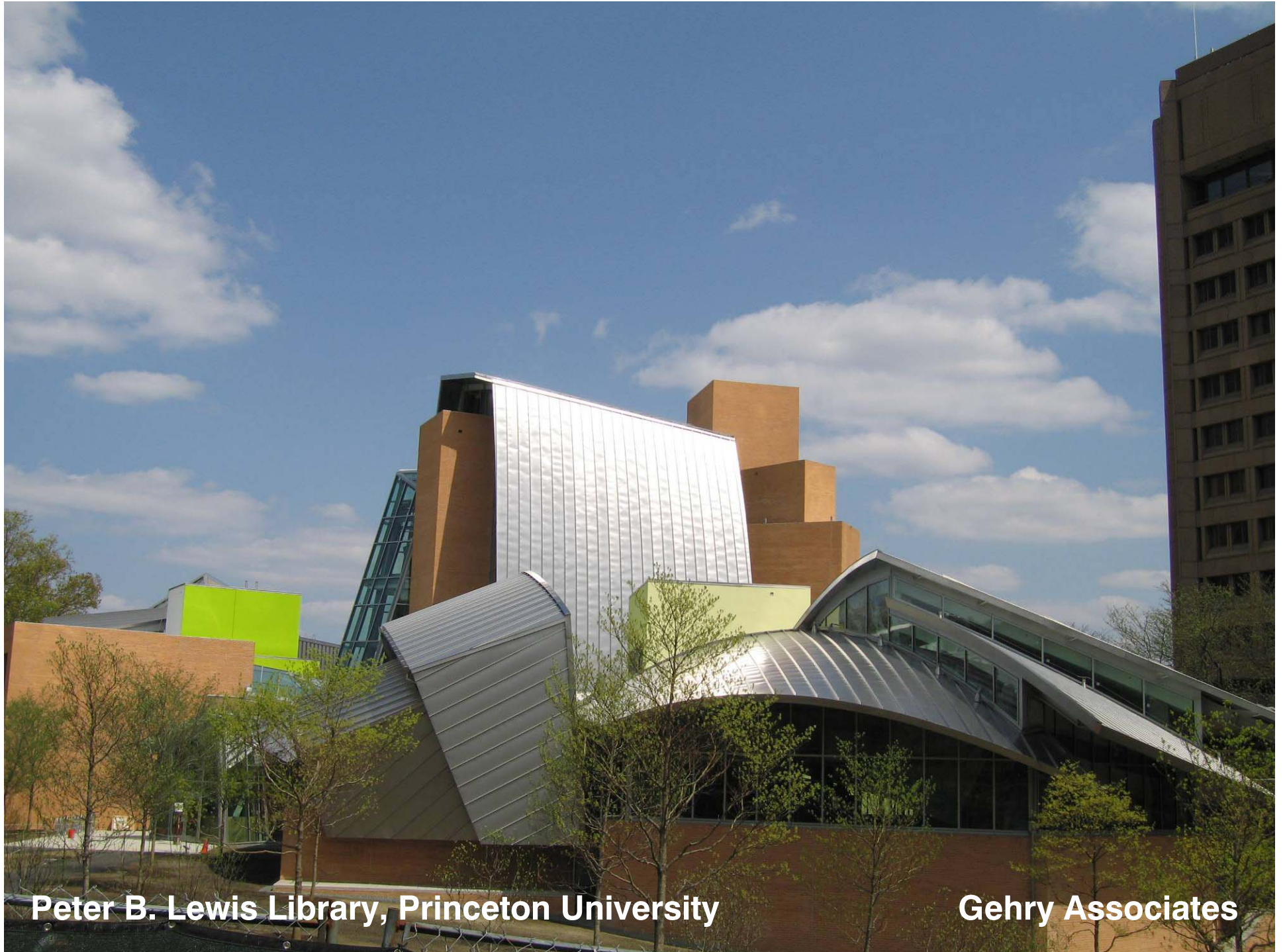






Guggenheim Museum, Bilbao, Spain

Gehry Associates



Peter B. Lewis Library, Princeton University

Gehry Associates









CAMPUS PLANNING OBJECTIVES

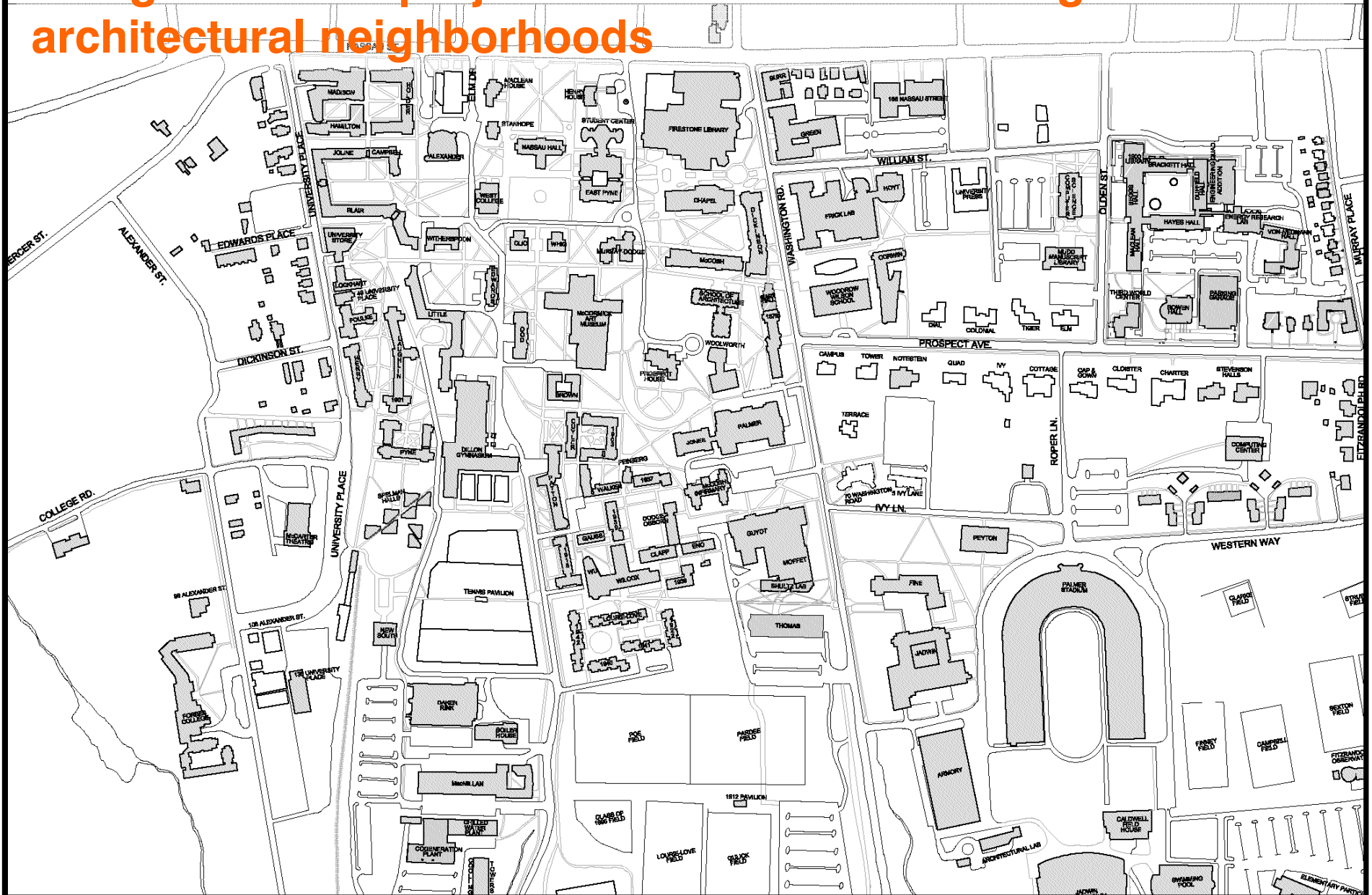
1. PIECING TOGETHER THE PHYSICAL FABRIC

2. WEAVING A PHILOSOPHICAL FABRIC

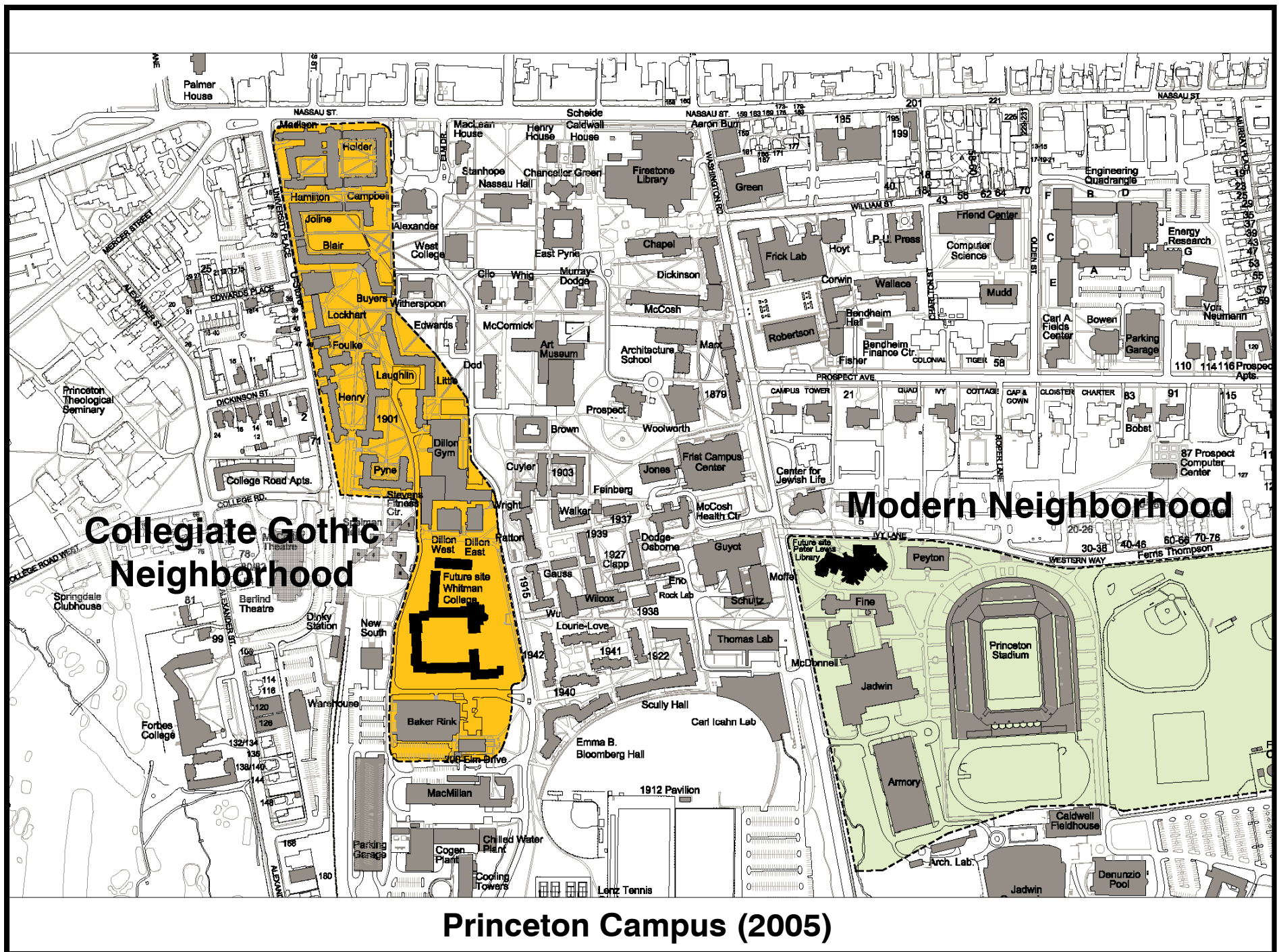
1. PIECING TOGETHER THE PHYSICAL FABRIC

- Siting the unlike projects to consolidate existing architectural neighborhoods
- Developing a transition zone between unlike neighborhoods
- Enhancing pedestrian circulation through the transition zone
- Cultivating a robust landscape as a counterpoint to the architecture

Siting the unlike projects to consolidate existing architectural neighborhoods



Princeton Campus (1995)



Developing a transition zone between unlike neighborhoods



Princeton Campus (2008)



The new Butler College dorms will complete a transition zone begun a half century ago





EMMA B. BLOOMBERG '01 HALL
MICHAEL DENNIS ASSOCIATES

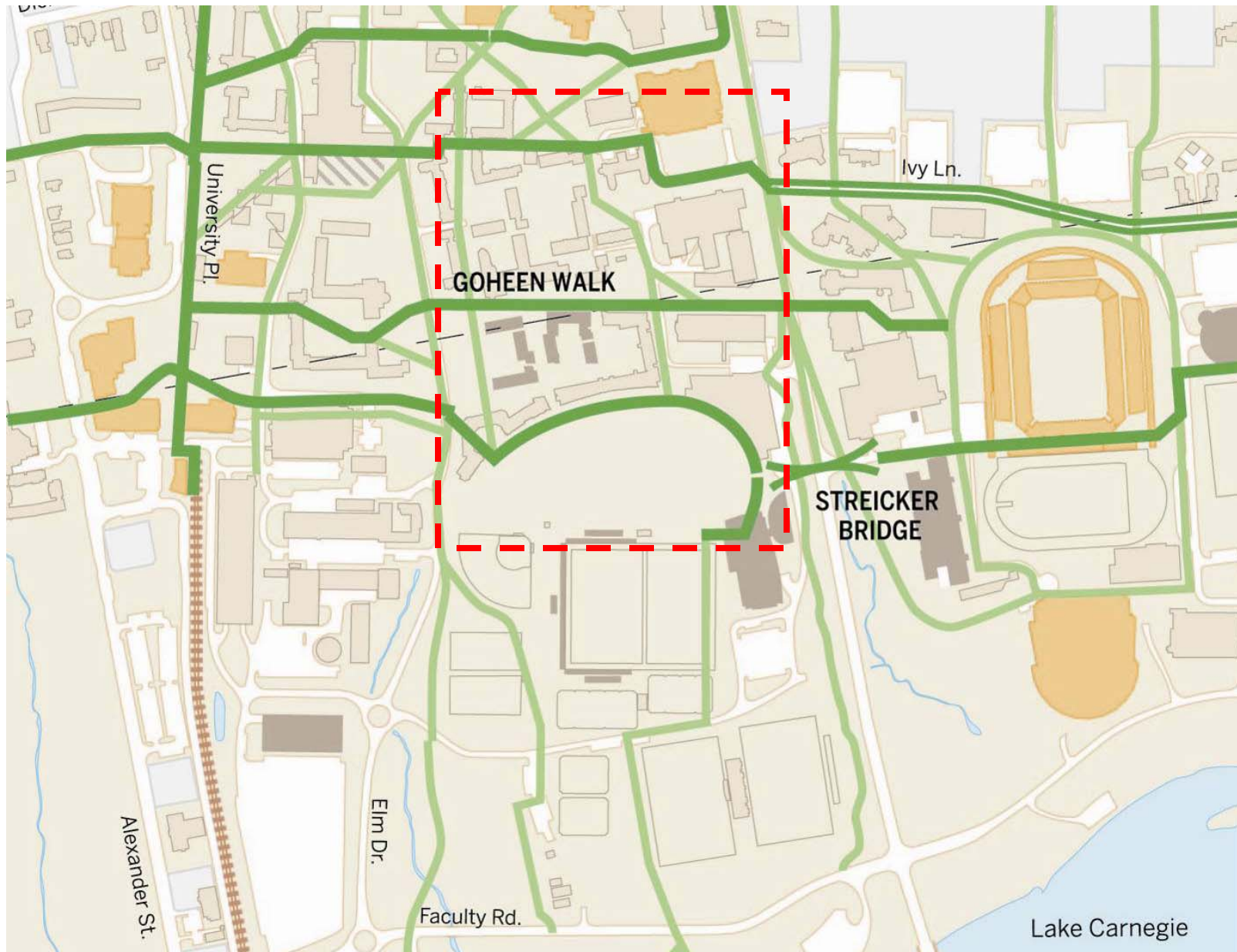


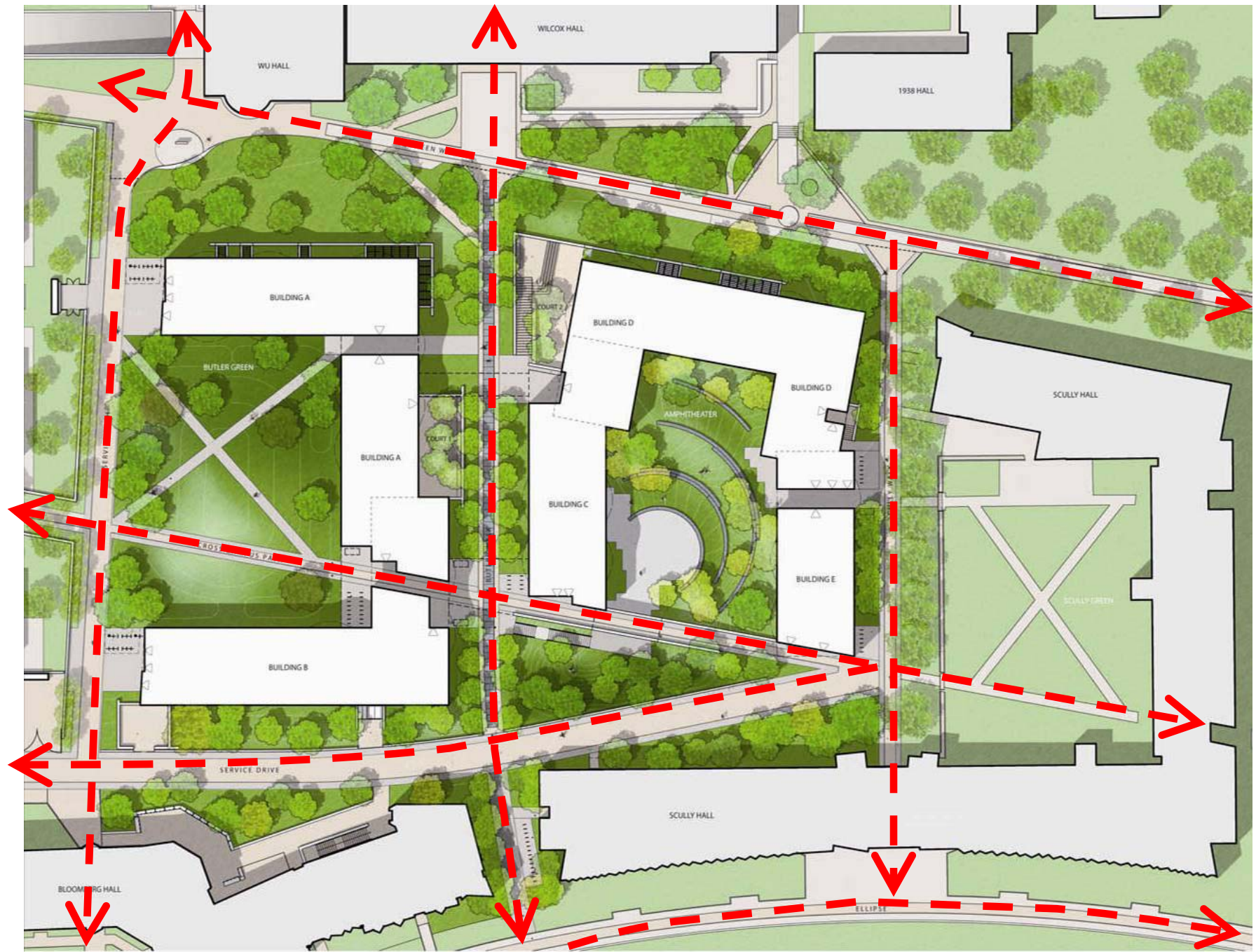
SCULLY HALL
MACHADO/SILVETTI ARCHITECTS



CARL ICAHN LAB
RAFAEL VINOLY

- Enhancing pedestrian circulation through the transition zone





Pedestrian paths will criss-cross through the buildings





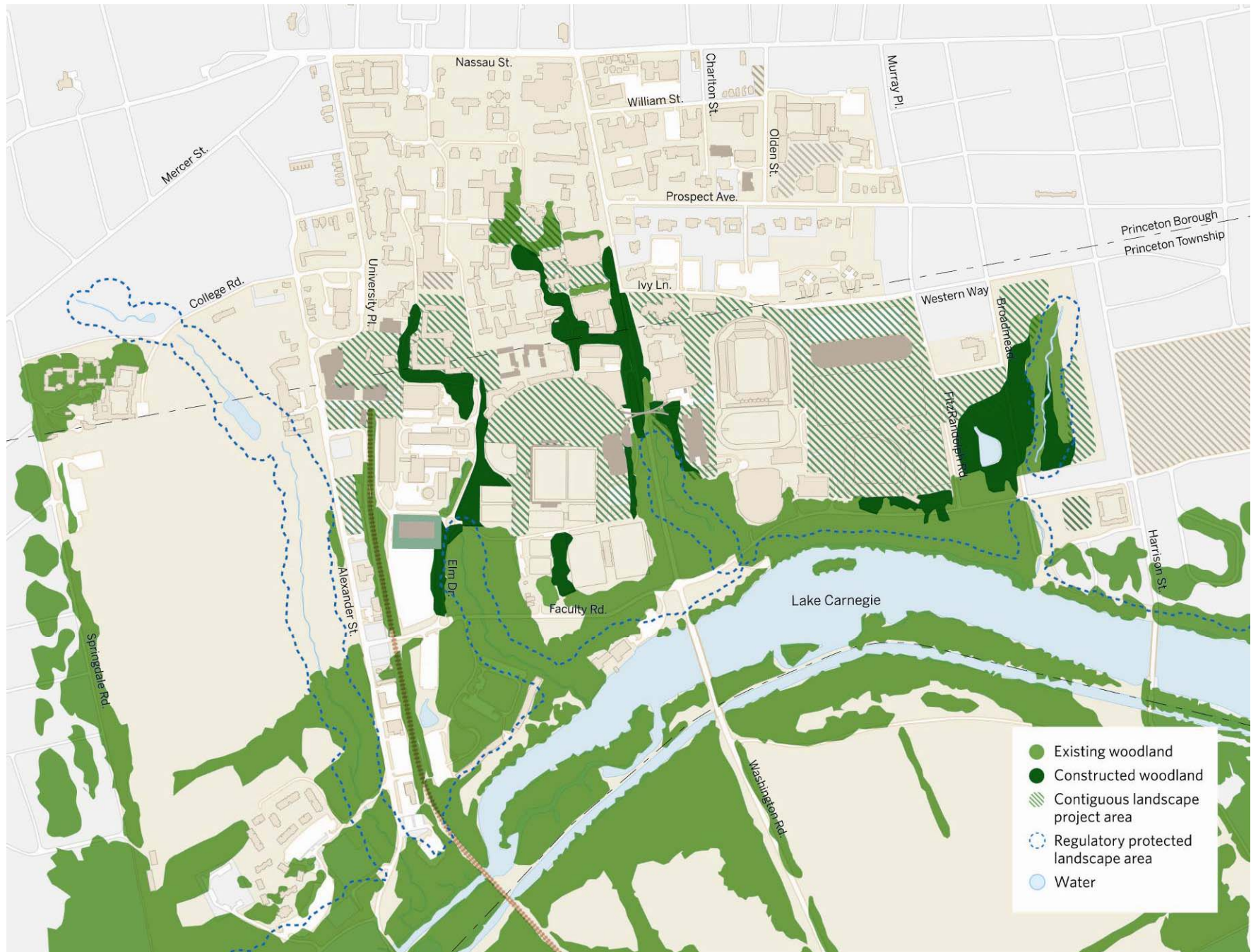


Cultivating a robust landscape as a counterpoint to the architecture





AN IVY LEAGUE TRADITION



Interweaving of the campus and the natural landscape



WOODLAND REINFORCED



WOODLAND EXTENDED



WOODLAND CREATED



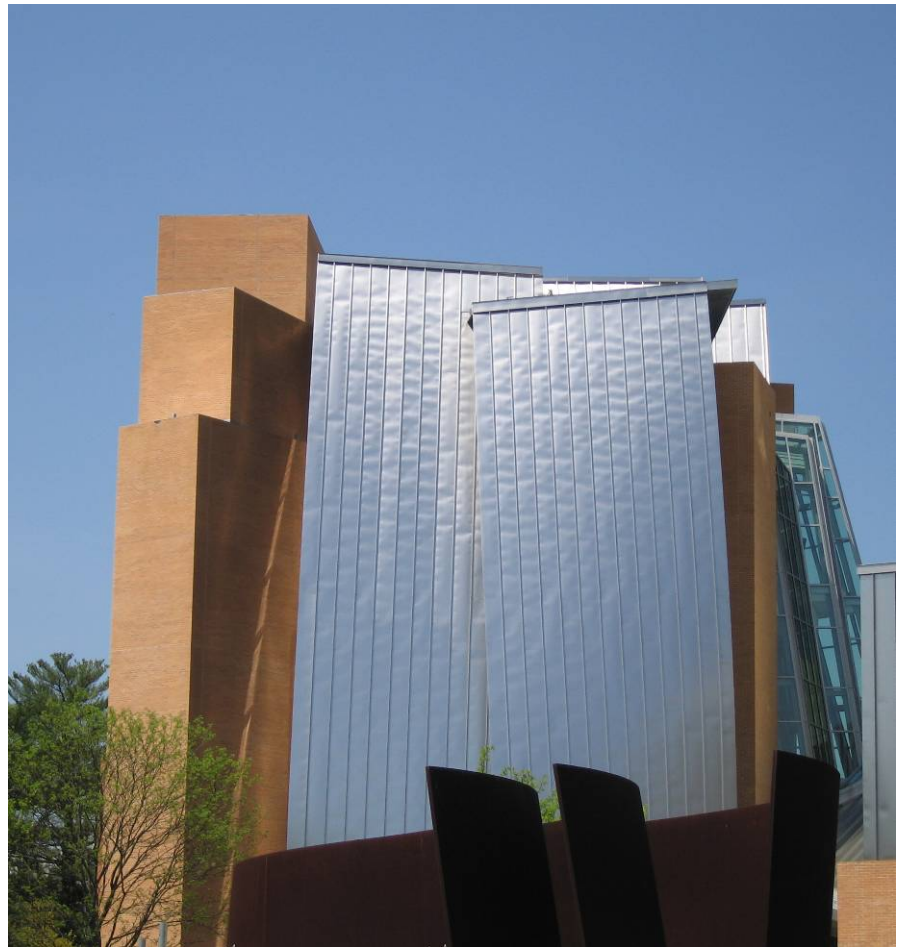
FRANK'S TREE HOUSE

2. WEAVING A PHILOSOPHICAL FABRIC





PORPHYRIOS GOTHIC



GEHRY GOTHIC