

# Deconstructing the Deconstructivist

UNIVERSITY OF CINCINNATI  
PLANNING + DESIGN + CONSTRUCTION  
DATE, 2015



# Introduction



Collaborate + Transform

**AUA-NE**  
60th Annual Conference

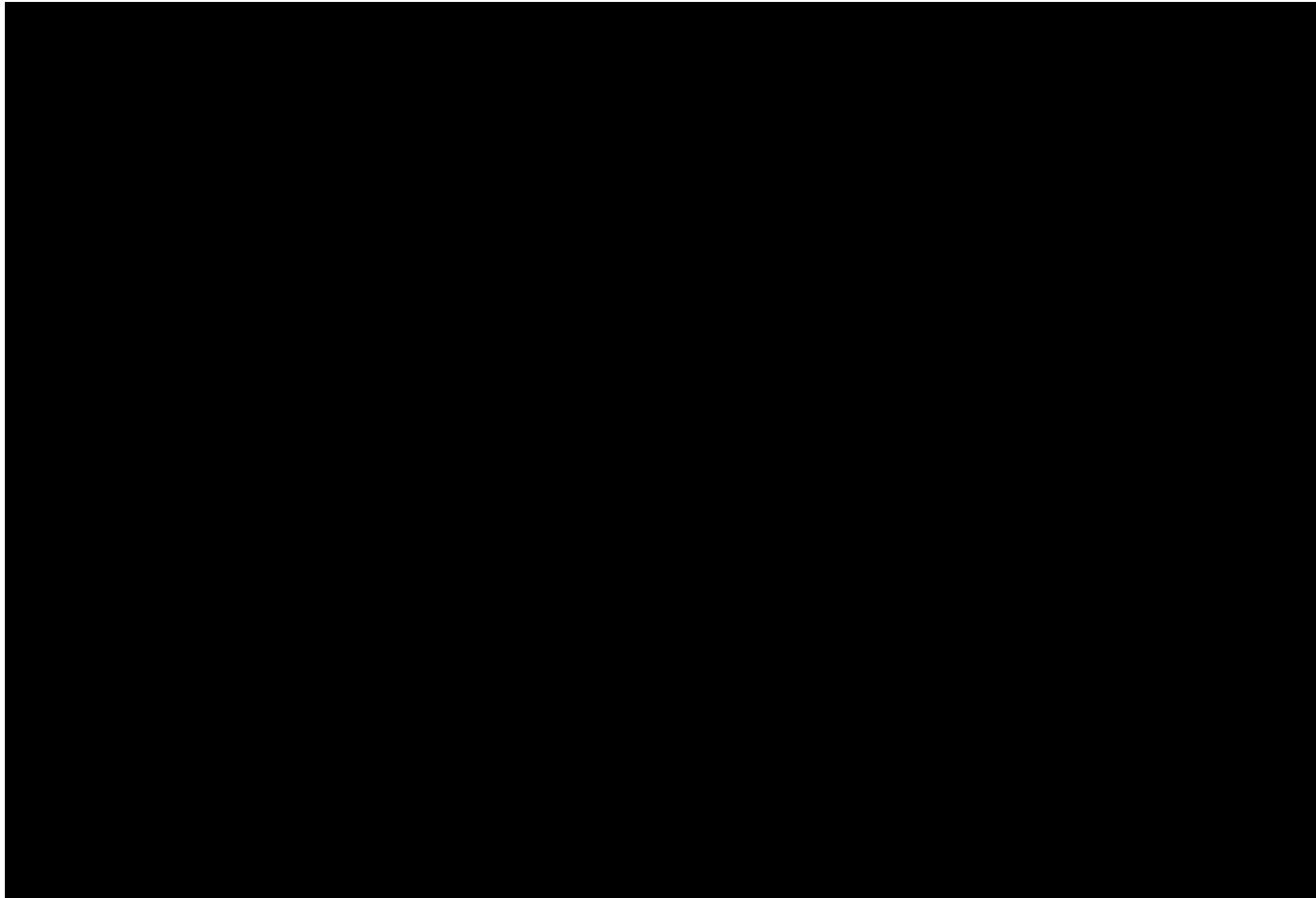
UNC Chapel Hill DUKE NC STATE

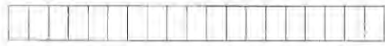
2015



Collaborate + Transform

**AUA**NE  
60th Annual Conference





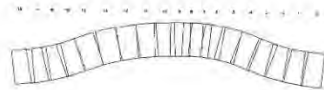
Segmented Line



Exponential Overlaps (1.6)



Asymptotic Tile (1.2)



Vertical Stepping



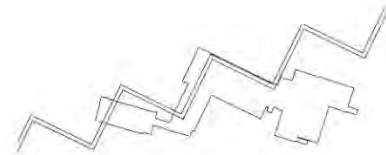
Exponential Torque (1.1)



Phase Shift



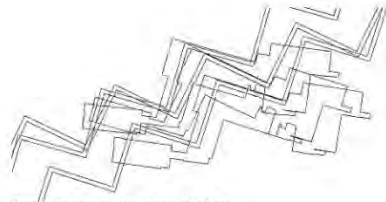
Existing Building



Ideal Chevron

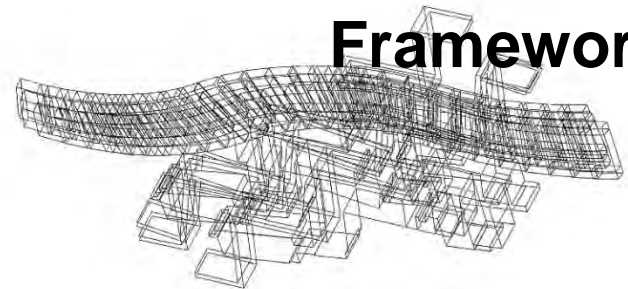


Trace of Existing Building Aligned with Wolfson

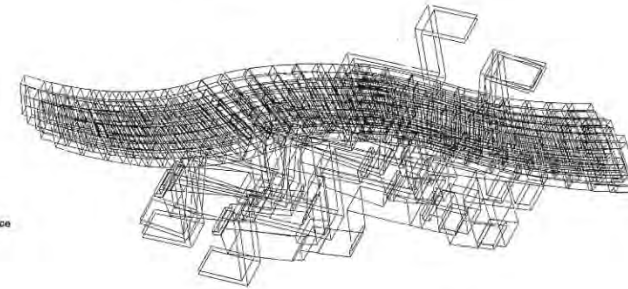


Trace of Existing Building Aligned with Alms

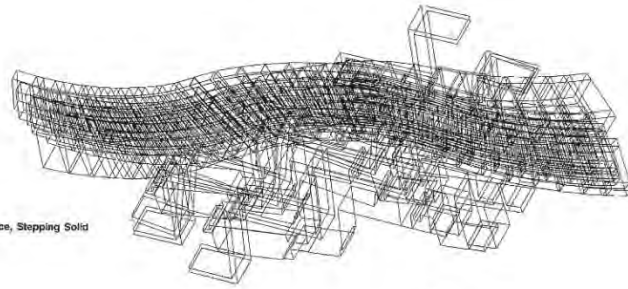
# Framework



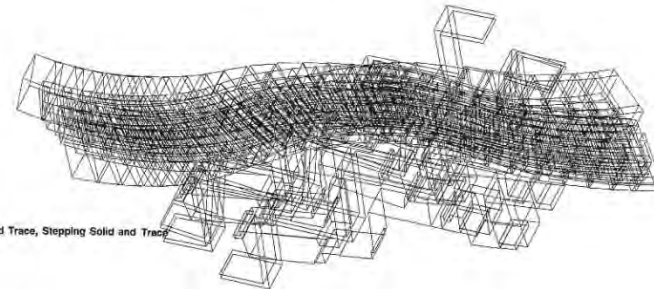
Torquing Solid



Torquing Solid and Trace

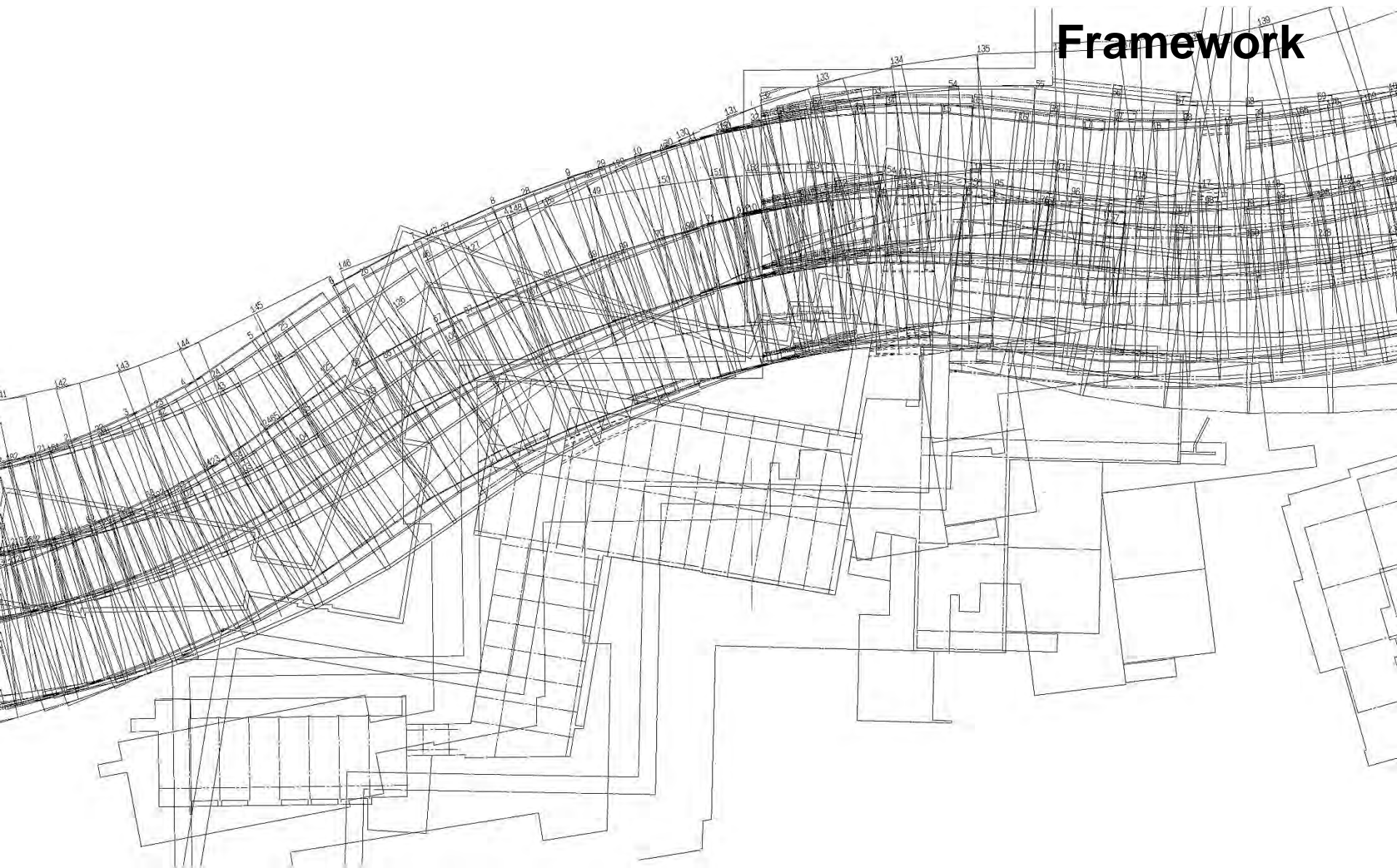


Torquing Solid and Trace, Stepping Solid



Torquing Solid and Trace, Stepping Solid and Trace

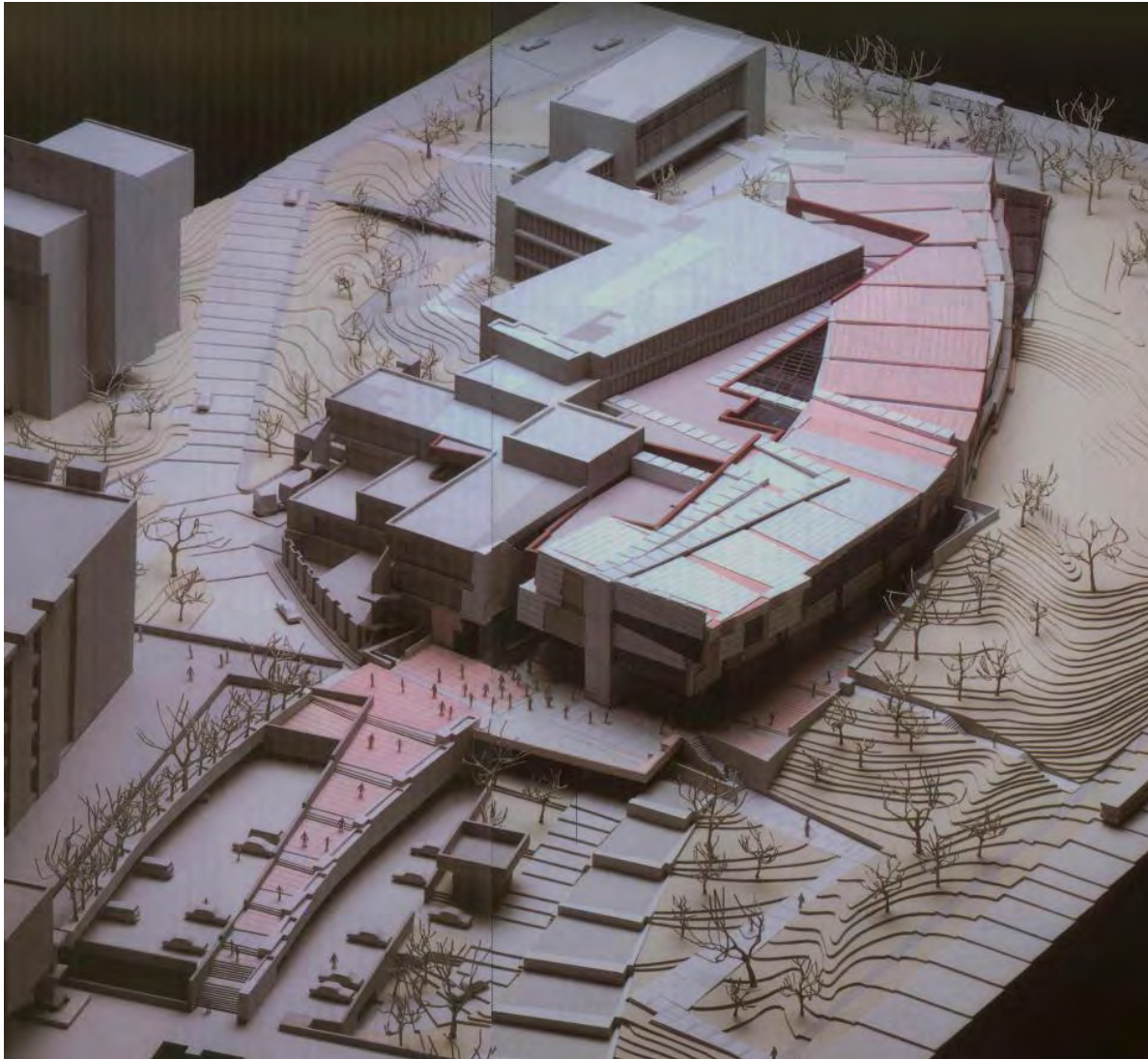
# Framework

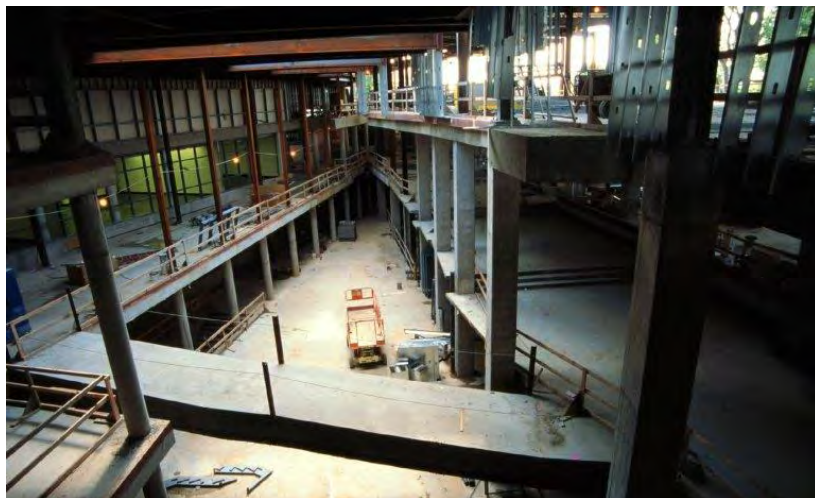


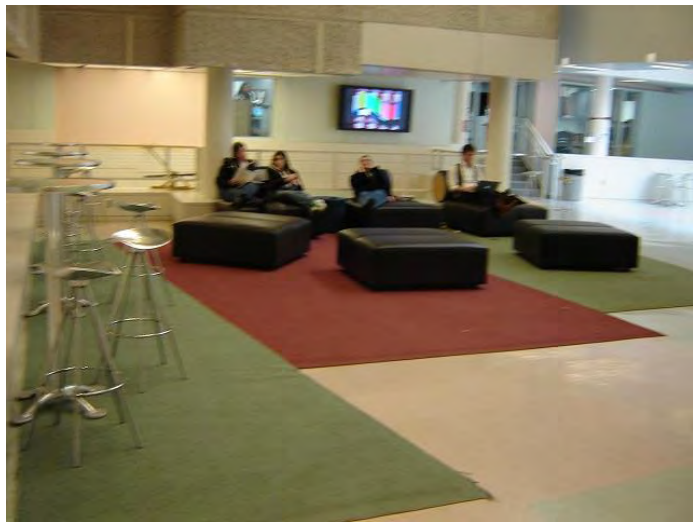
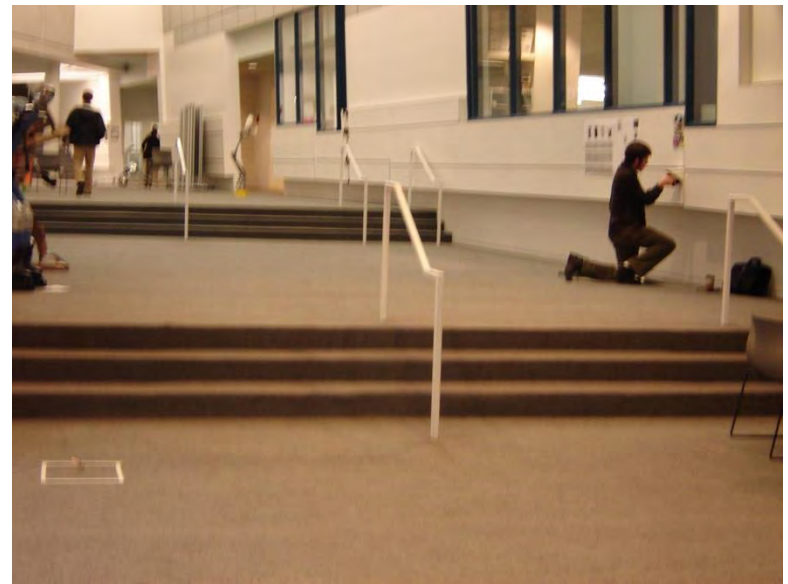
# Site



# Site







# Problems



# Problems



Collaborate + Transform

**AUA NC**  
60th Annual Conference

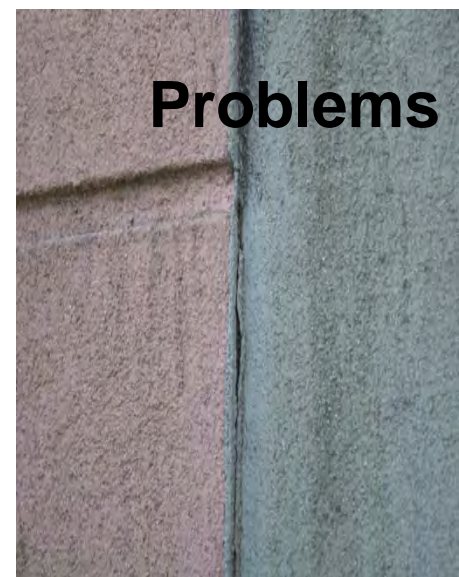
UNC Chapel Hill DUKE NC STATE 2015

# Problems



# Problems





## Problems



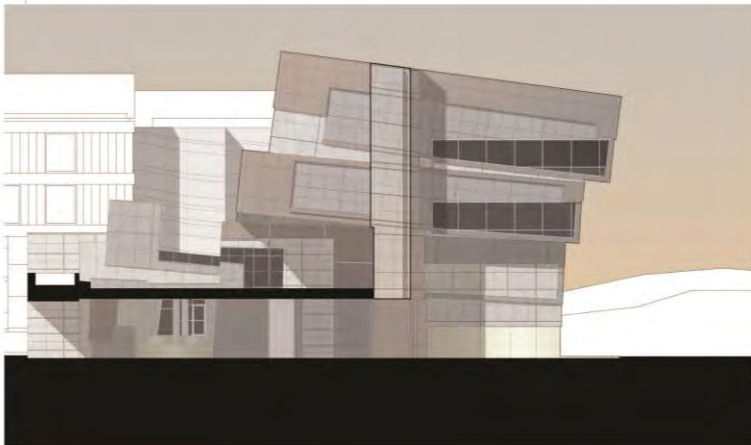


# Study of Materials



University of Cincinnati KZF DESIGN

Aronoff Center for Design & Art



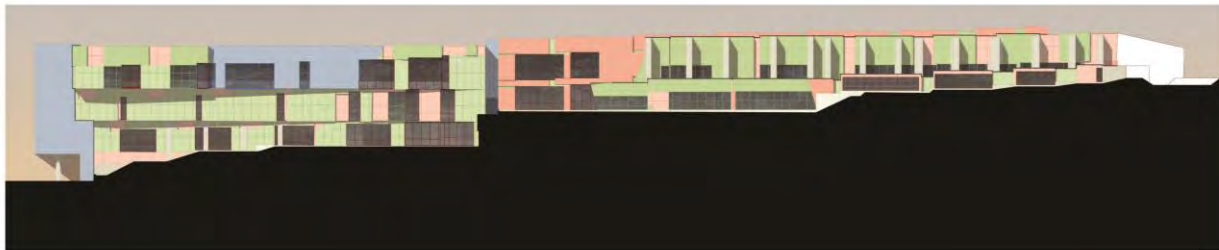
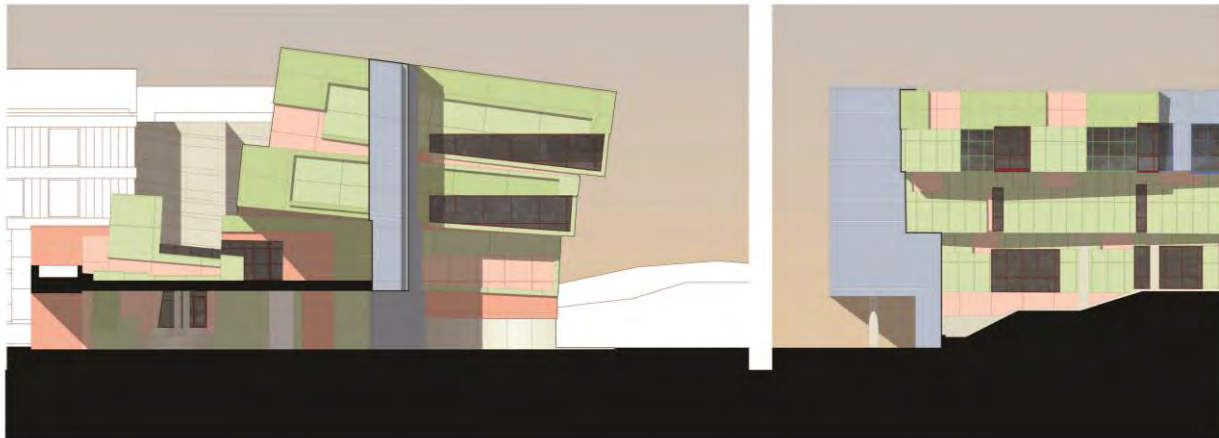
Aronoff Center for Design & Art

# Study of Materials



University of Cincinnati KZF DESIGN

Aronoff Center for Design & Art



University of Cincinnati KZF DESIGN

Aronoff Center for Design & Art



# Campus Heritage Plan

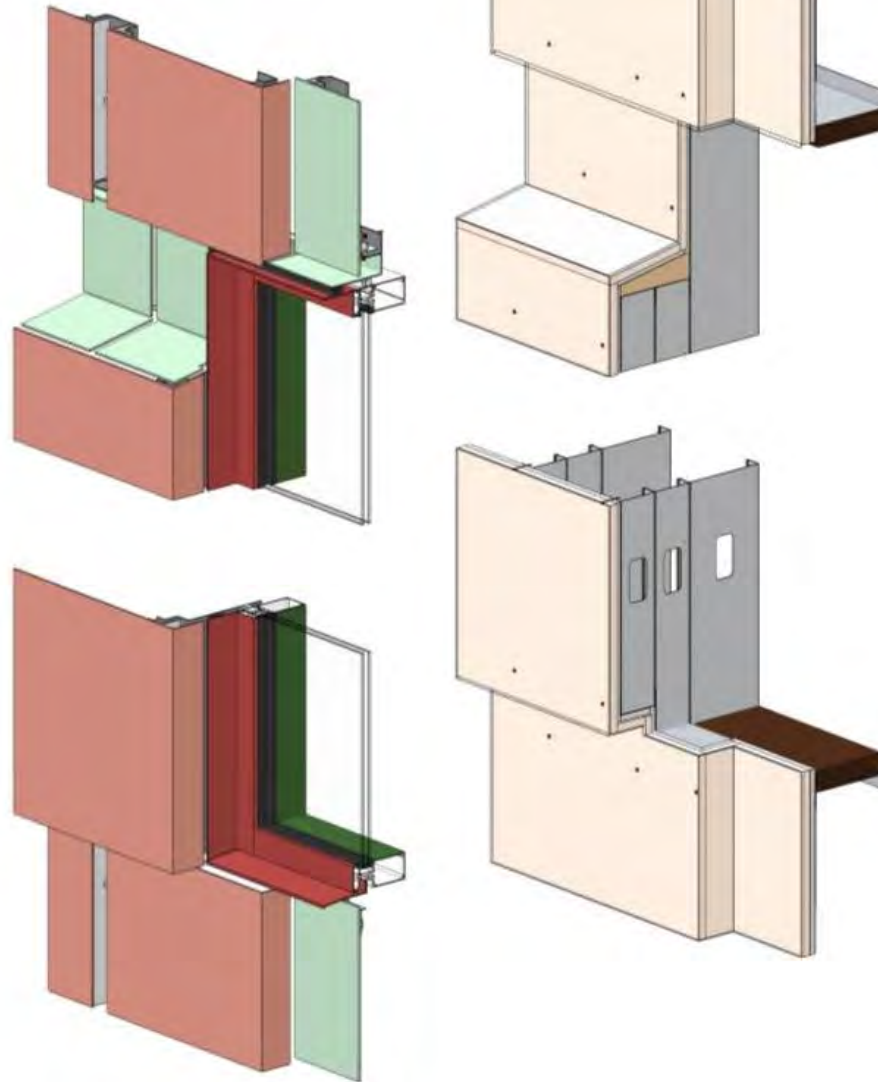
*August 1, 2008*

## Study of Materials

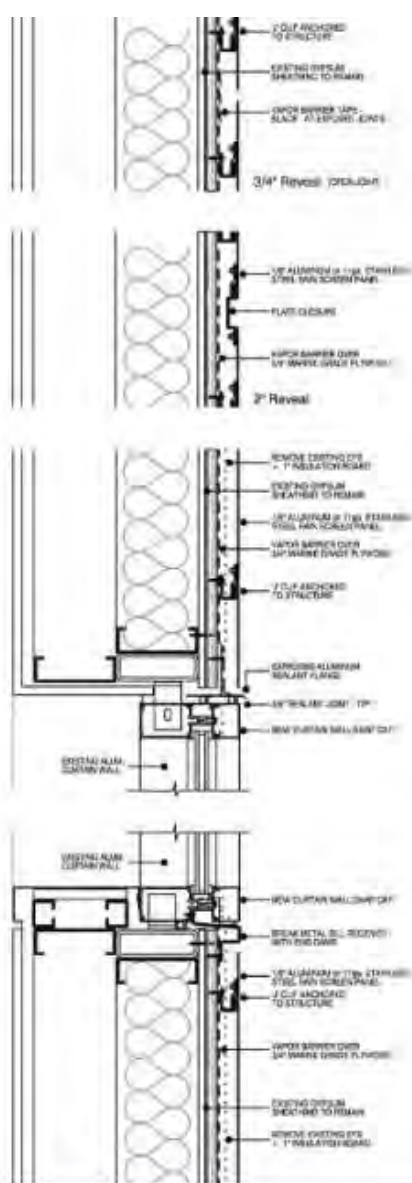
### Approach

- Understand the history & significance of buildings & landscapes.
- Identify character-defining features that are significant to the designs of buildings & landscapes.
- Establish appropriate levels of treatment & degrees of change to which buildings & landscapes can be subjected without losing character-defining attributes.
- Establish appropriate guidelines to evaluate proposed changes.

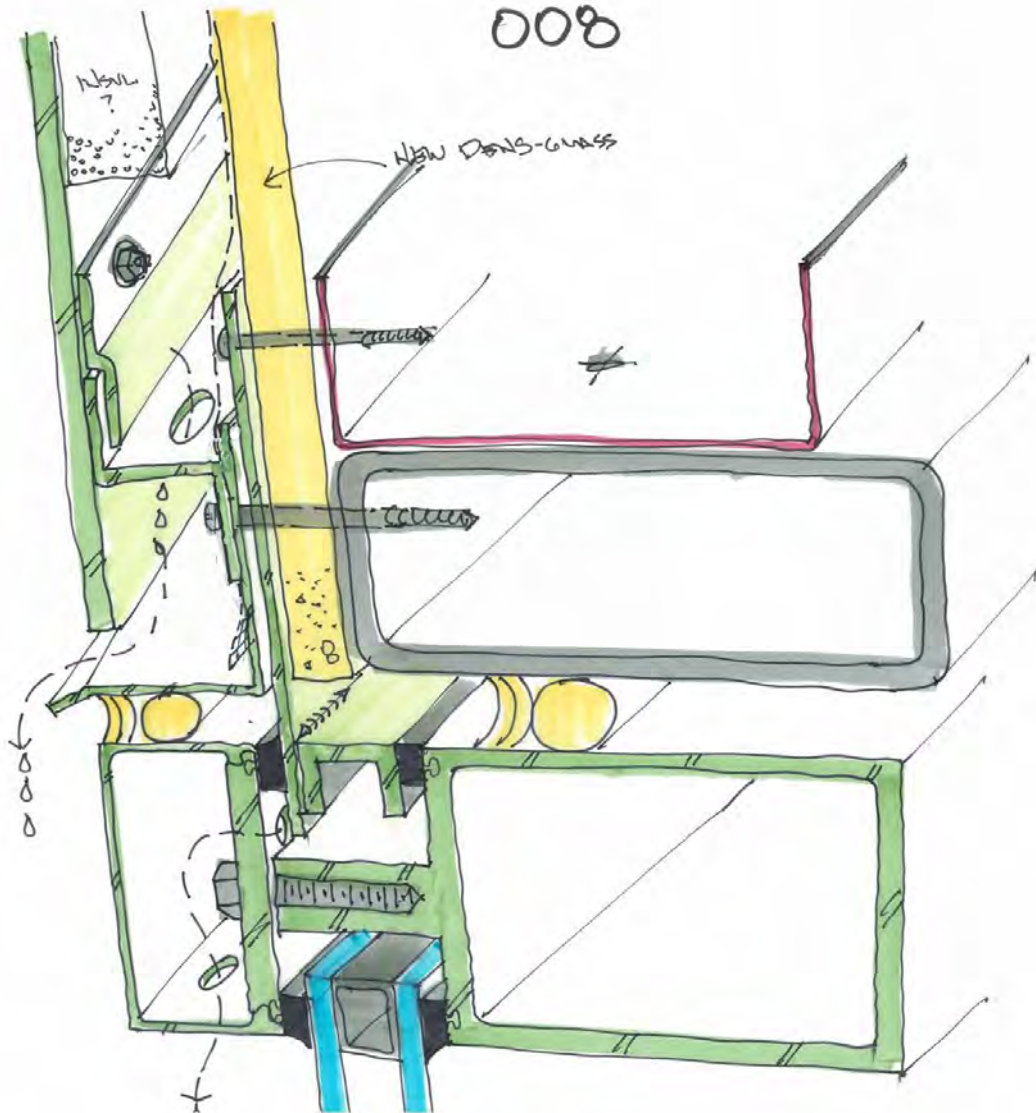
# Metal Panels



# Metal Panels

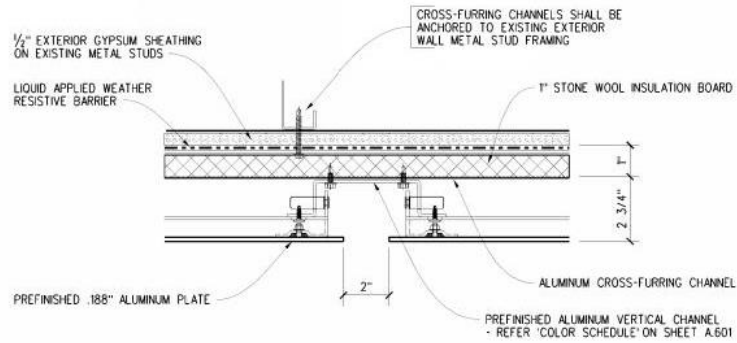


DETAILS  
continued on next slide



Collaborate + Transform

**AUAC** NC  
60th Annual Conference



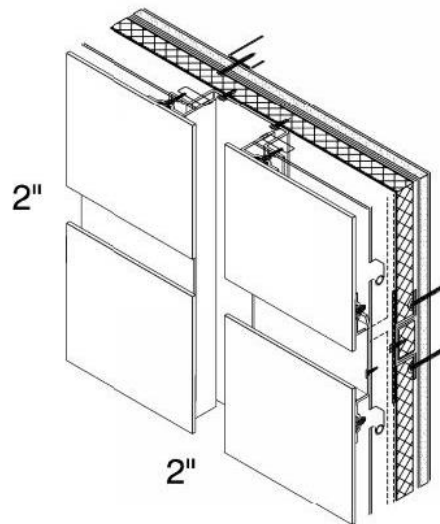
VERTICAL JOINT

2" WIDE JOINT

PLAN DETAIL

3  
SCALE 0 2 in 4 in 6 in

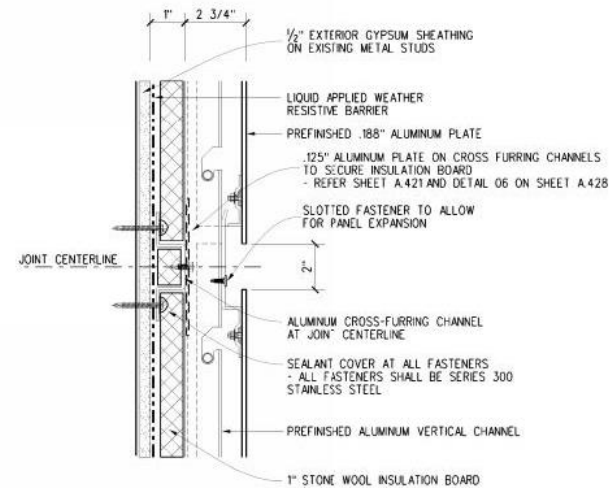
a



2" x 2" JOINT INTERSECTION

SECTION AXON

03a



HORIZONTAL JOINT

2" WIDE JOINT

SECTION DETAIL

3  
SCALE 0 2 in 4 in 6 in

03

# Metal Panels

# Demolition of EIFS



06/29/2012 09:44

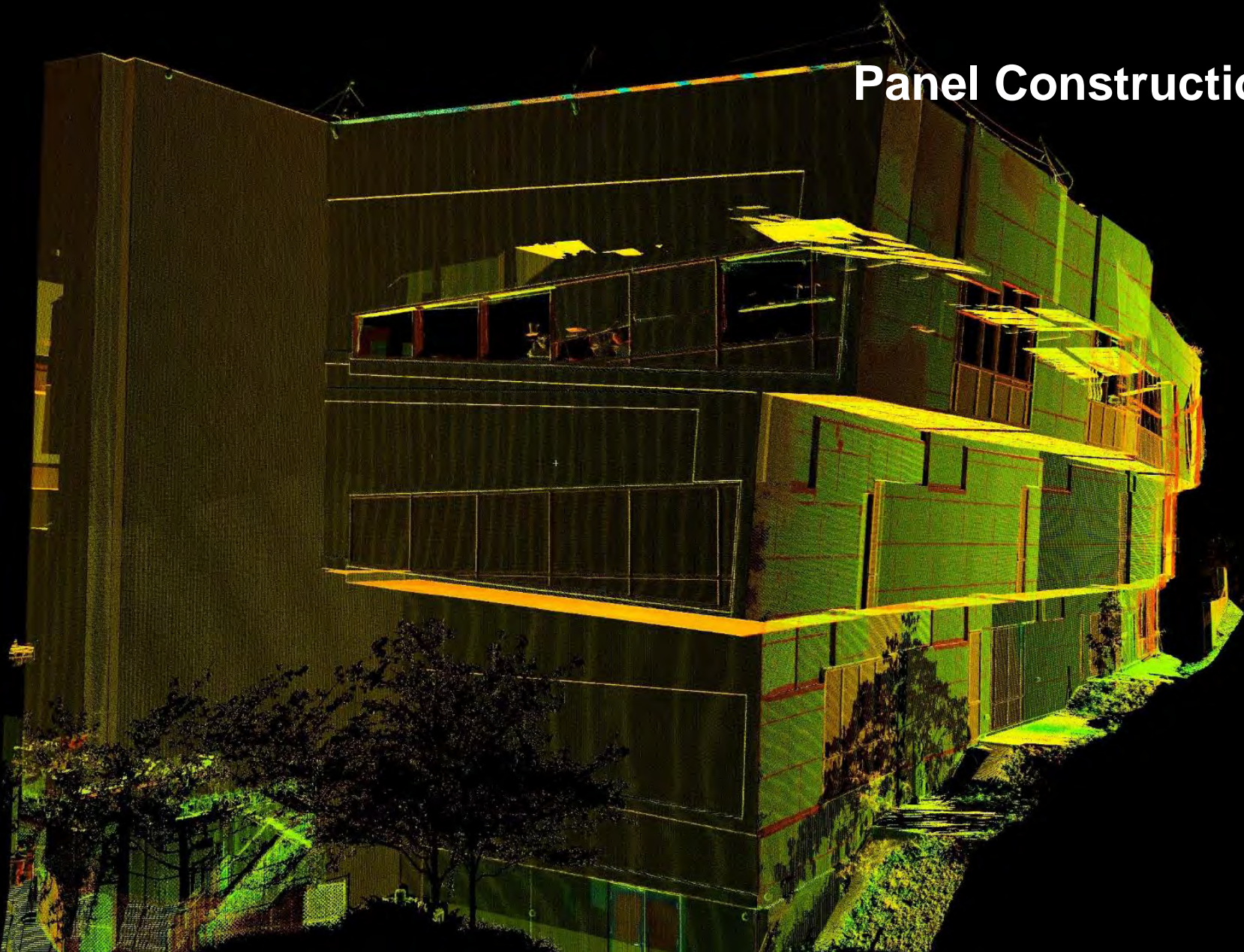
Collaborate + Transform

**AUA-NC**  
60th Annual Conference

# Weather Barrier



# Panel Construction



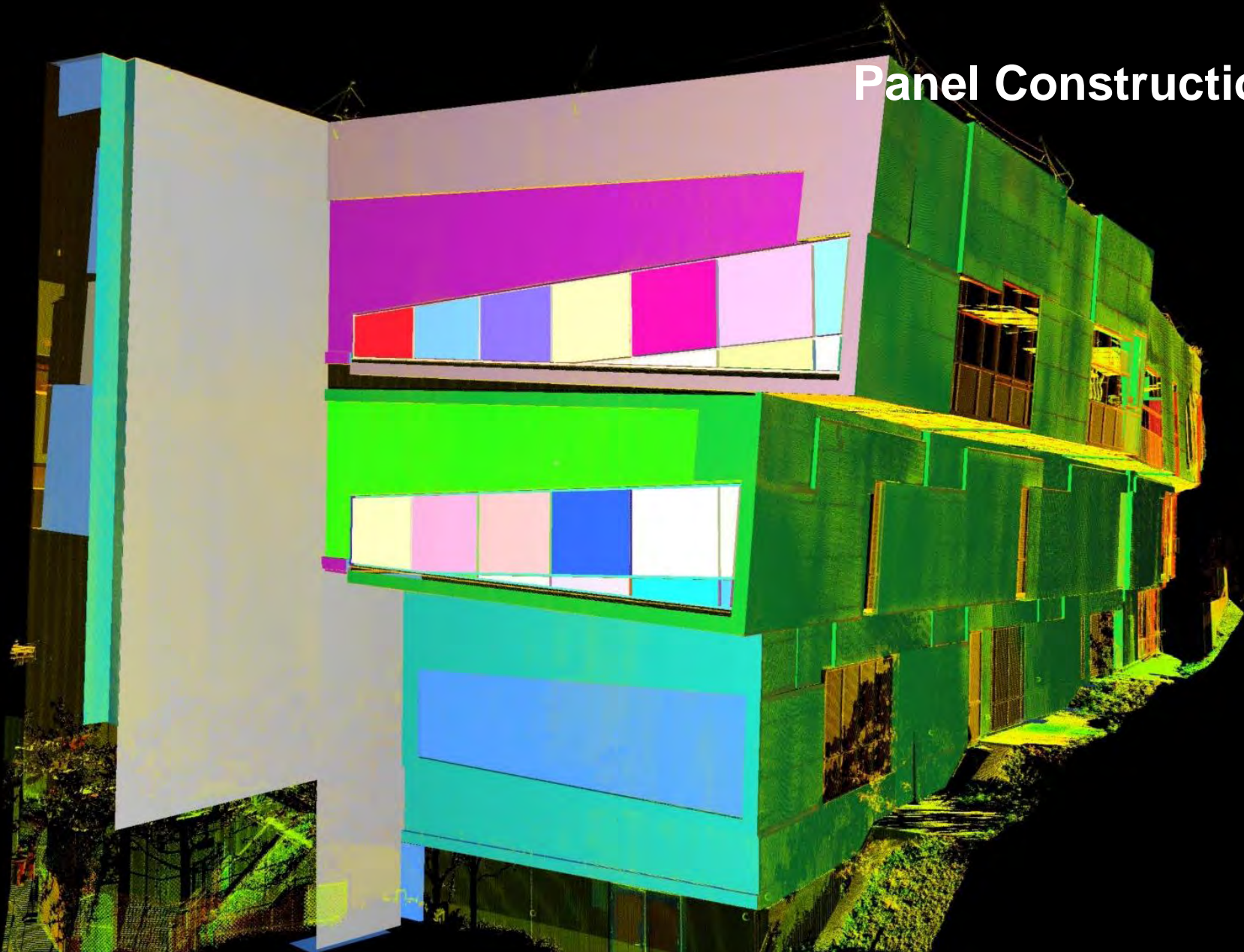
Collaborate + Transform

**AUA/NC**  
60th Annual Conference

UNC Chapel Hill DUKE NC STATE

2015

# Panel Construction



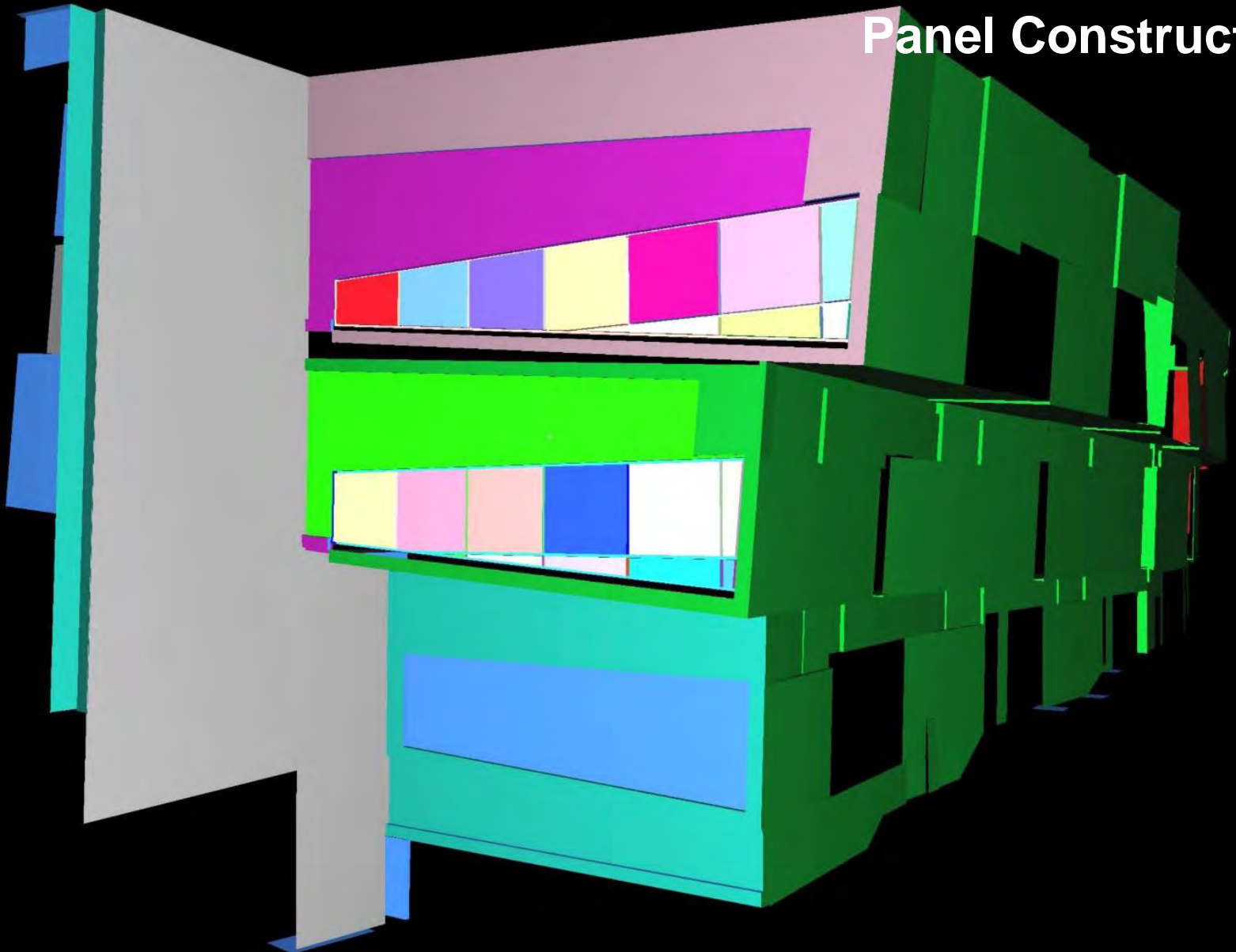
Collaborate + Transform

**AUA NC**  
60th Annual Conference

UNC Chapel Hill DUKE NC STATE

2015

# Panel Construction



Collaborate + Transform

**AUA NC**  
60th Annual Conference

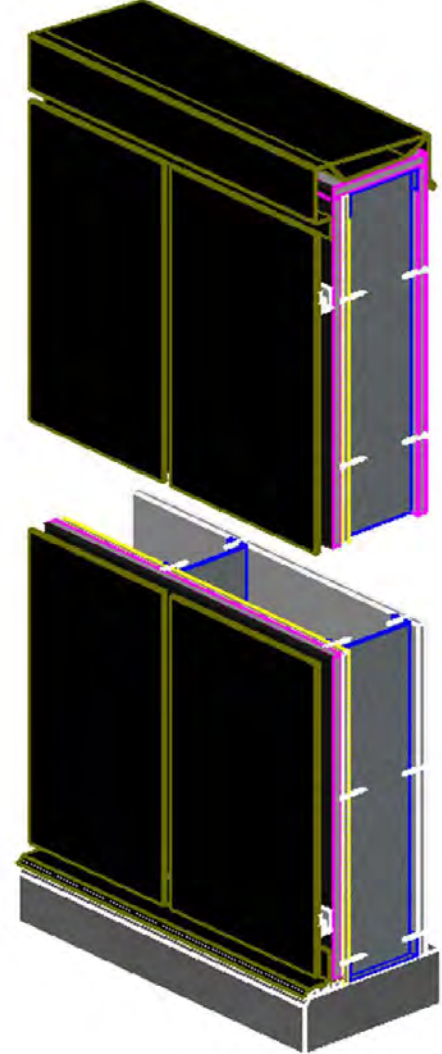
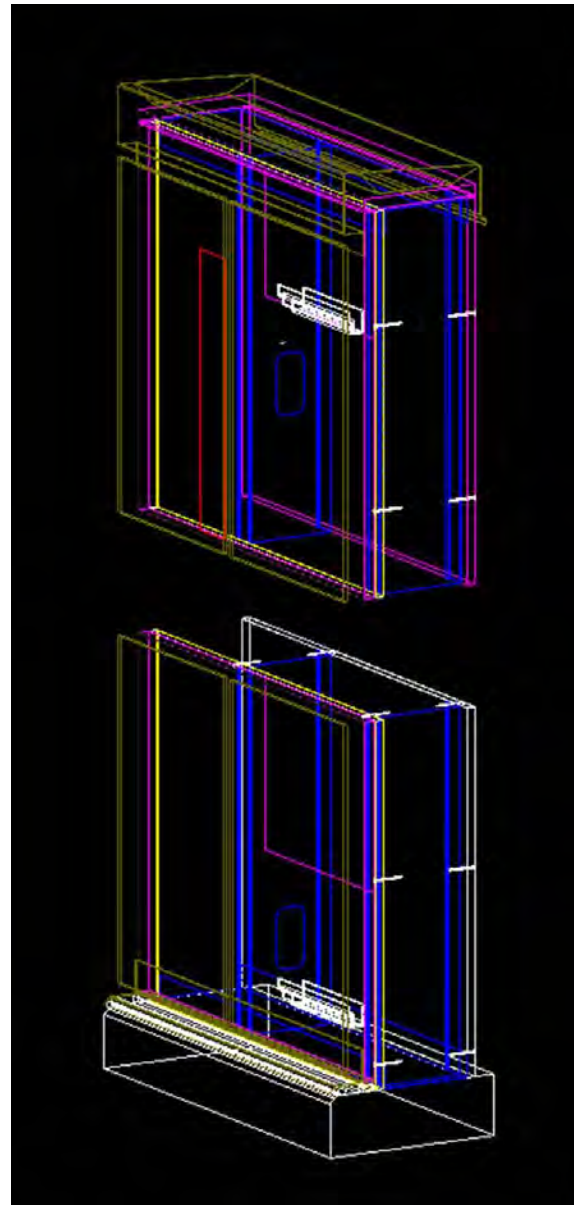
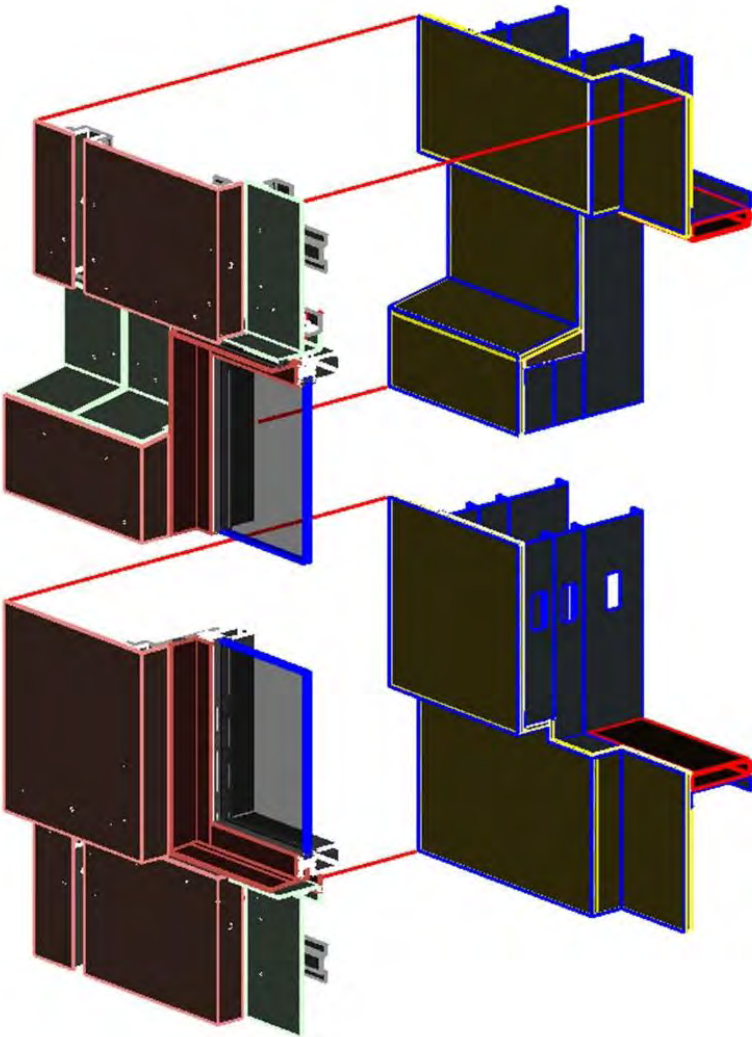
# Panel Construction



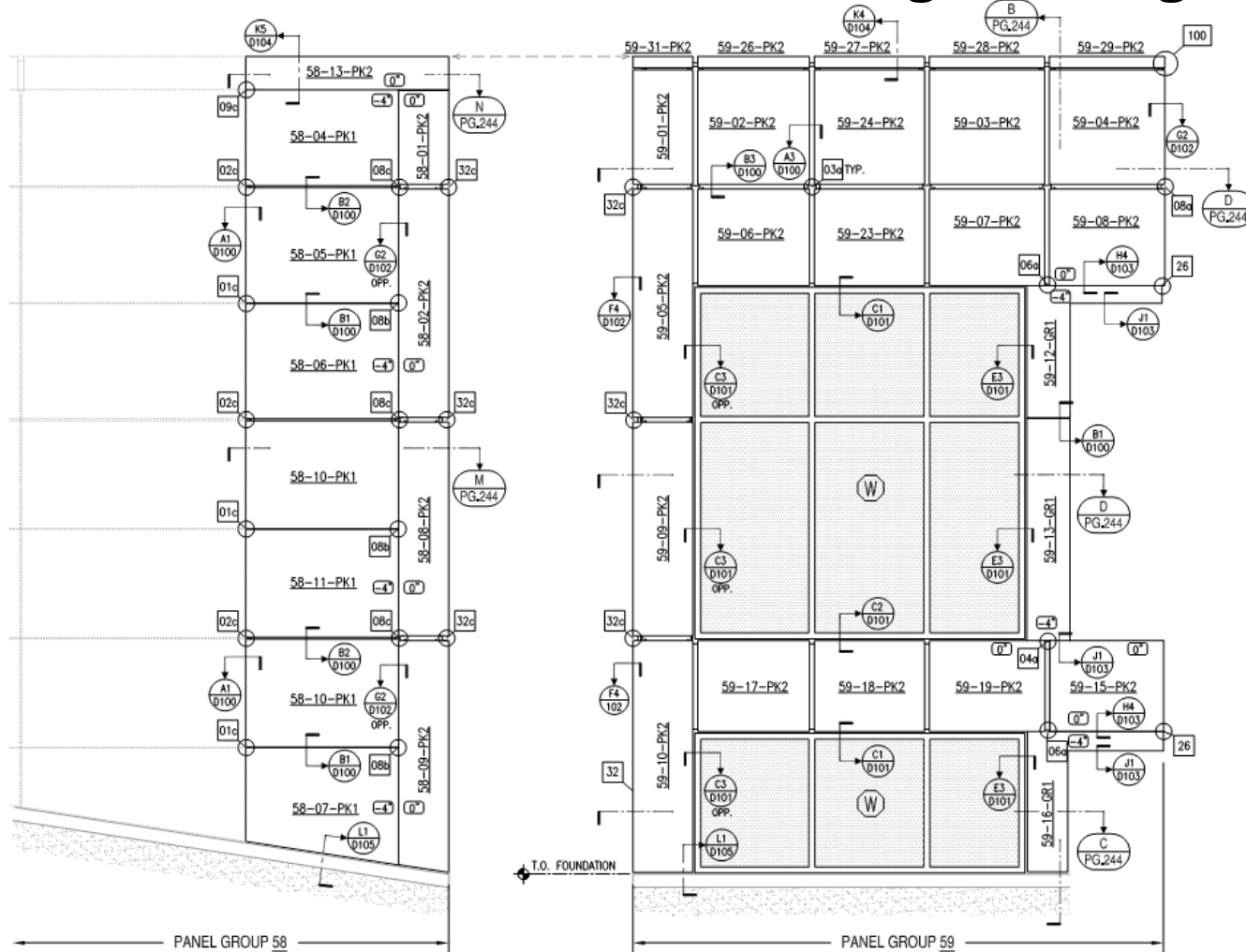
Collaborate + Transform

**AUA NC**  
60th Annual Conference

# Construction



## Challenges Along the Way



MOCK-UP PANEL ELEVATIONS (PANEL GROUPS 58 & 59)  
SCALE: 3/8" = 1'-0"



## Challenges Along the Way



# Challenges Along the Way



## Challenges Along the Way





## Before & After



# Before & After

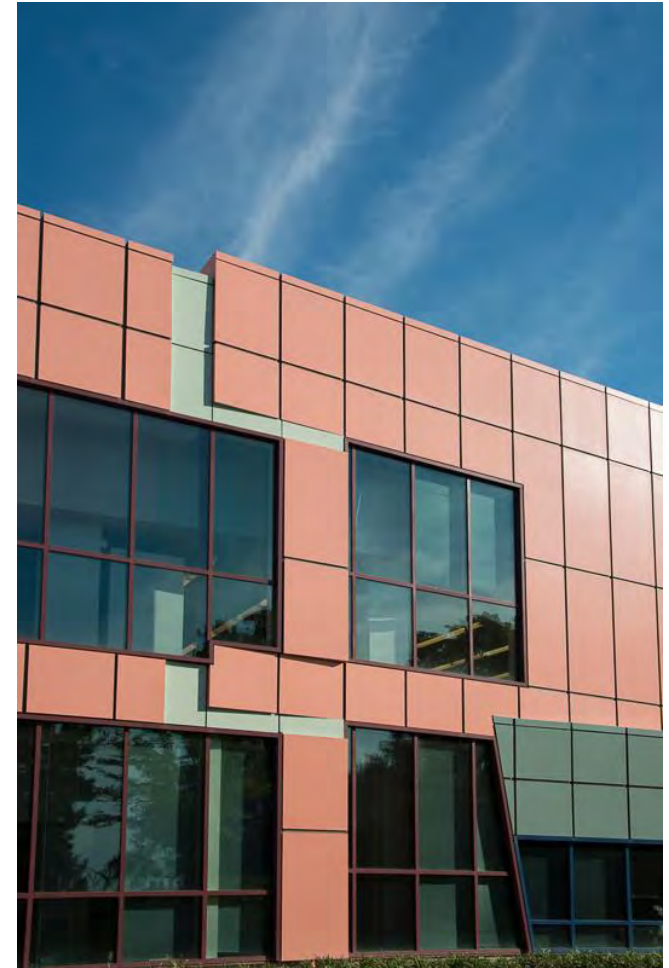


Collaborate + Transform

**AUA NE**  
60th Annual Conference

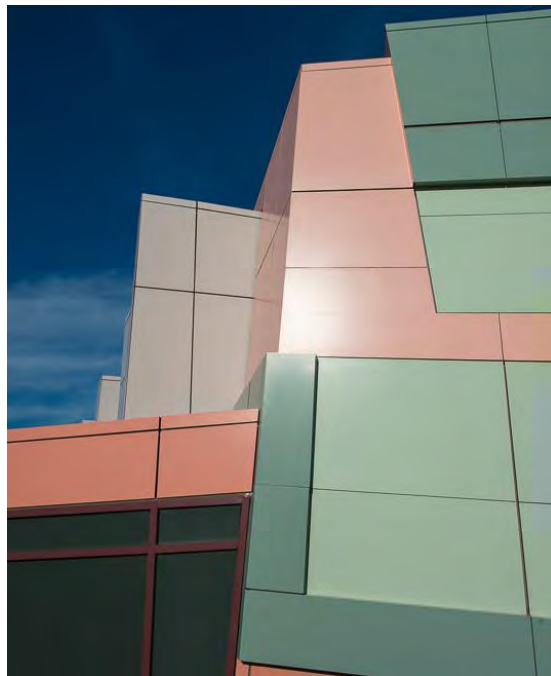
UNC Chapel Hill DUKE NC STATE 2015

## Before & After



Today









Collaborate + Transform

**AUA**NE  
60th Annual Conference