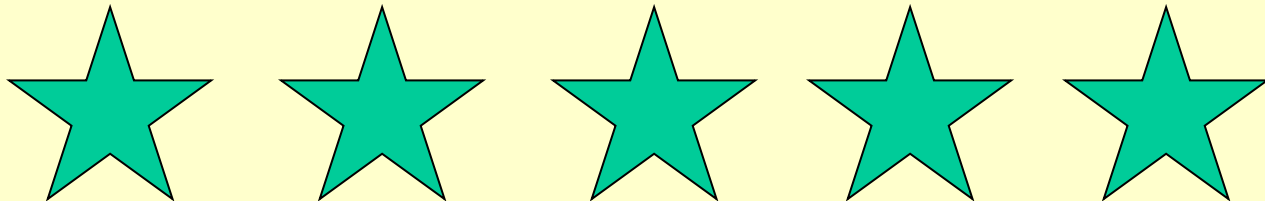


AUA 2003 -- Crossing the line

Understanding the issues related to
working with **international**

STAR
architects



AUA 2003
STAR architects



Why this topic?

The architect of the moment

Globalization of place.....

where's the “there” in Vancouver gone?

International theme

What are the lessons learned
we can share with each other
to make this a positive



AUA 2003
STAR architects



Panelists

John Rishling *The University of Texas*

How is the selection process different ?

Ron Kull *The University of Cincinnati*

How do you convince contractors these buildings can be built and how do you obtain exotic materials?

David Neuman *Stanford University*

How are the different stylistic bents of the various designers melded into a cohesive whole?
and/or something about campus context.

Rob Jones *The Art Institute of Chicago*

How are cost containment and fundraising different?



AUA 2003
STAR architects



How is the selection process different?



AUA 2003
STAR architects



Mari and James A. Michener Collection of Twentieth-Century American Painting



1995

School of Architecture Dean, Larry Speck
wrote to University President Robert Berdahl

- Importance of getting the right architects who would respond creatively to the new University Art Museum.
- We have a checkered history of architect selection on the campus which ranges from visionary to bureaucratic (with the visionary part mostly in the distant past and the bureaucratic part mostly in recent times).
- The Campus Master Plan consultant selection process broke new ground in this regard.
- Demonstrated design excellence should be a significant criteria alongside other important qualifications.



AUA 2003
STAR architects



Short List of Finalists

- Cesar Pelli & Associates, Connecticut
- Cooper, Robertson & Partners, New York
- Johnson Johnson & Roy, Michigan & Dallas
- Pei Cobb Freed & Partners, New York
- Perkins & Will, Chicago



AUA 2003
STAR architects







THE UNIVERSITY OF TEXAS AT AUSTIN



Campus Master Plan







UT TOWER

This is a stylized map of the University of Texas at Austin campus. Buildings are represented by grey silhouettes, and green spaces are shown with light green dots. A blue line representing a river or path winds through the campus. Three specific locations are highlighted with orange lines and labels: the UT Tower in the upper left, the Blanton Site in the center, and the State Capitol in the lower right. A black circle is drawn around the Blanton Site. The map is oriented with the river flowing from the top right towards the bottom right.

BLANTON
SITE

STATE
CAPITOL

December 1997

Request for Qualifications sent to architects worldwide

- Museum will be a **center for scholarship** and professional training and a laboratory for innovative curatorial and education research.
- It will strive to be a **national model** for fostering an understanding of the visual arts for The University and, in so doing, for the community-at-large.
- The Blanton, housed in an architecturally distinguished building, **will be a statement** of the commitment of The University of Texas to the visual arts.
- The project **cost is limited to \$27M.**



UT System Project Manager Summary of Submittals:

- **Earliest to arrive** – 02/26/98 – Professor Architect Gustov Peichl, Vienna
- **Greatest Distance** – Bombay / Charles Correa
- **Shortest Distance** – Austin
- **Heaviest Package** – 42 lbs, 10 oz / Dominique Perrault, Paris
- **Lightest Package** – 14 oz / Ushida Findlay Partnership, Tokyo & London
- **Letter of Commendation from royalty** – HRH Prince Charles / Venturi, Scott Brown & Associates, Philadelphia
- **Most pleasing aroma** – Legorreta Arquitectos, Mexico City (custom fabricated leather binder)



AUA 2003
STAR architects



Short List of Finalists

- **Antoine Predock Architect, Albuquerque, New Mexico**
- **Herzog & DeMeuron, Basel, Switzerland**
- Rafael Vinoly Architects, New York City
- Snohetta, Oslo, Norway
- **Steven Holl Architects, New York City**
- Thompson & Rose Architects, Cambridge, Massachusetts
- Tod Williams Billie Tsien & Associates, New York City



AUA 2003
STAR architects

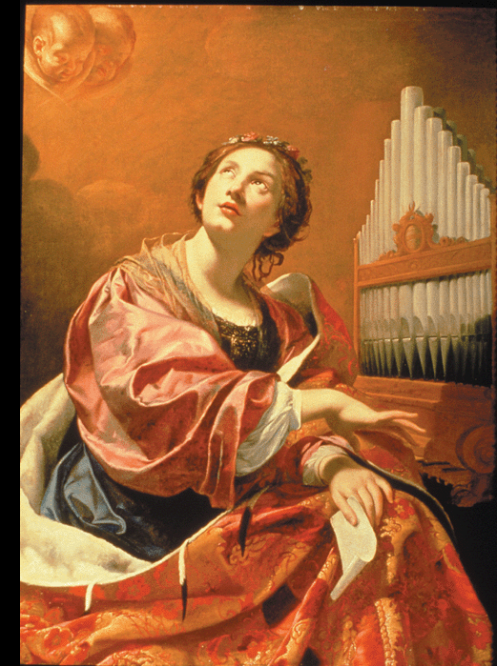






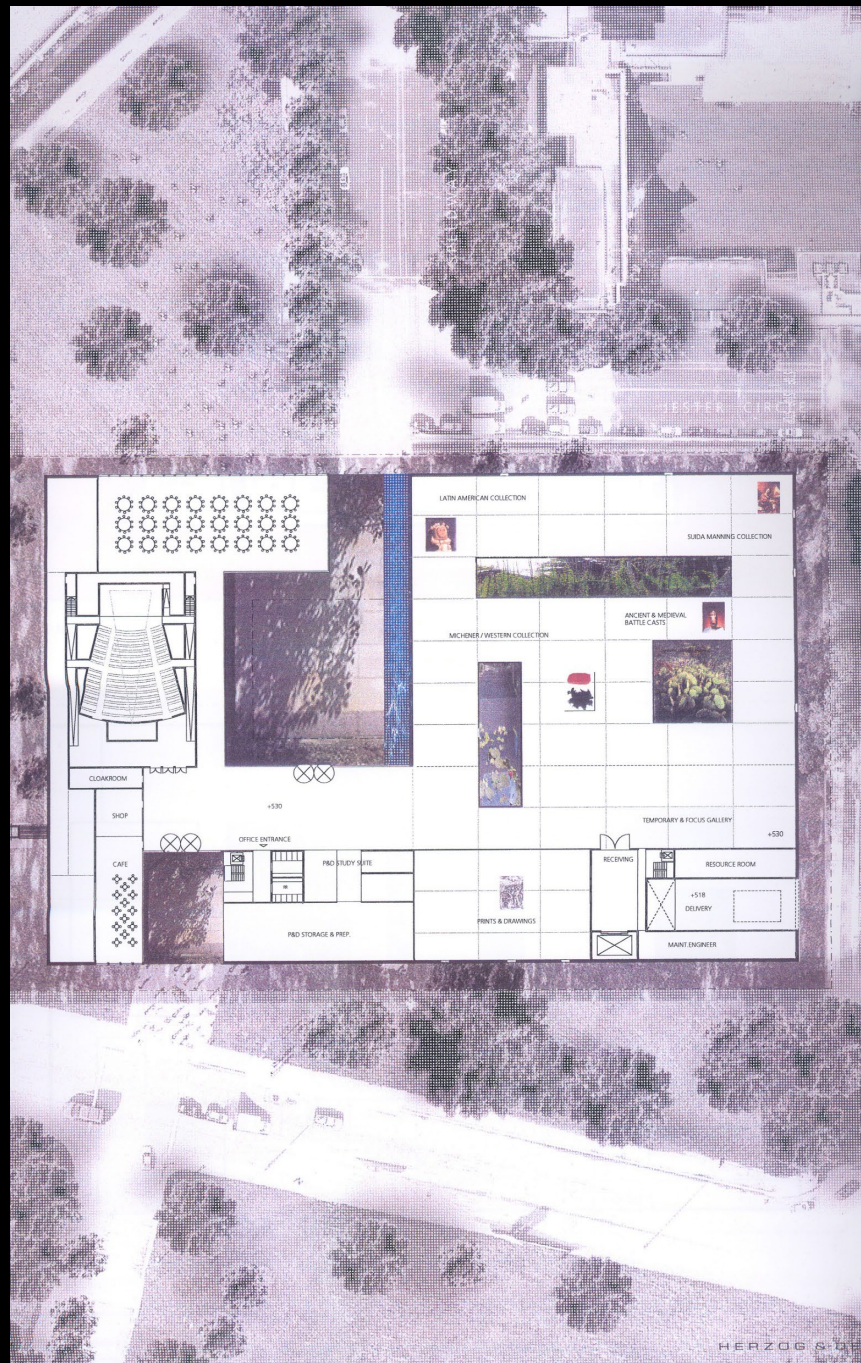


Suida-Manning Collection











**Hold the bologna
we want the Swiss**

**Don't Build a
Bland-ton Museum**



AUA 2003
STAR architects





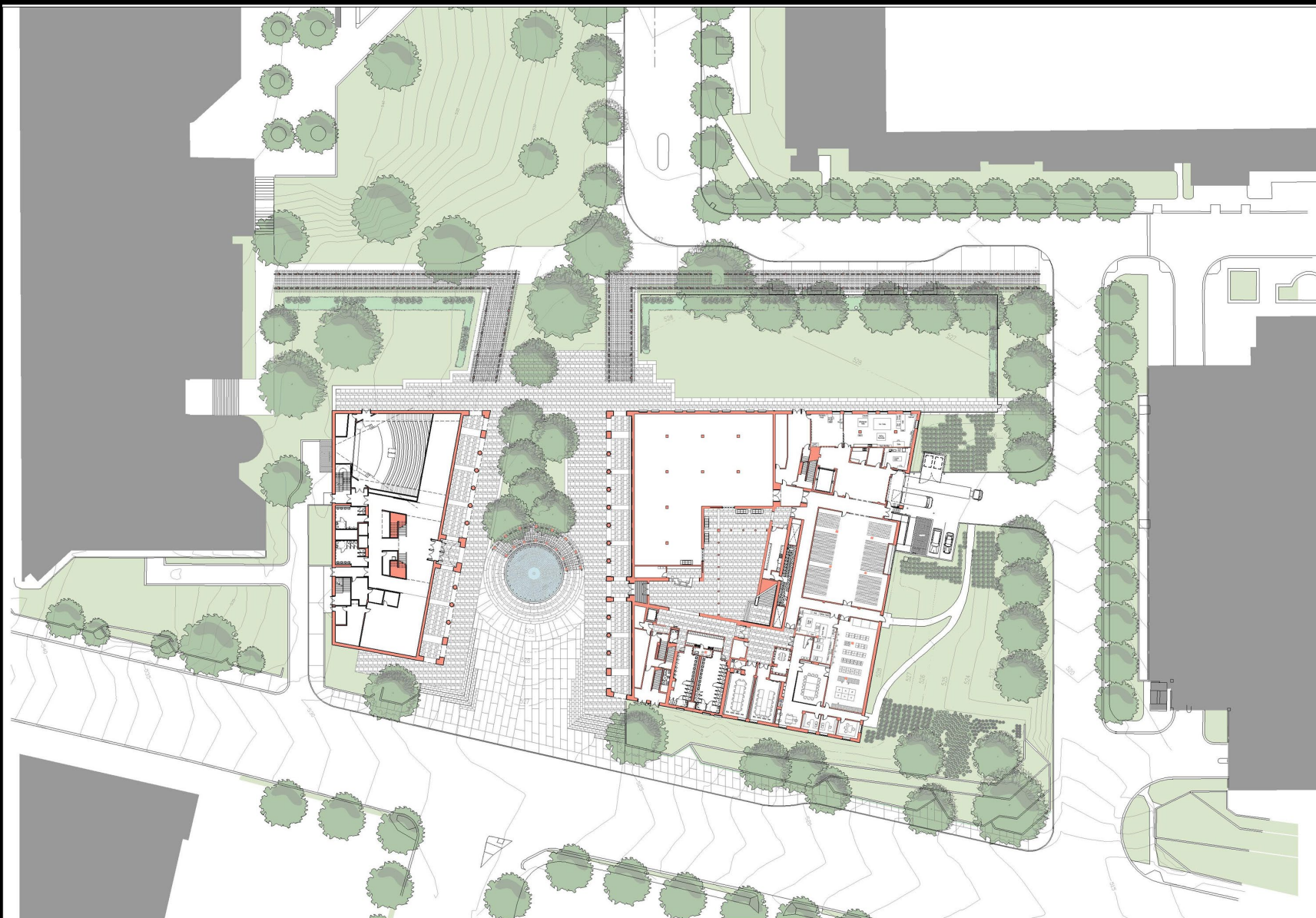
Mid-July, Seven Semifinalists Named

- **Michael Graves & Associates, Princeton**
- Hammond Beeby Rupert Ainge, Chicago
- Hartman Cox/Carter Burgess, Washington
- **Kallman, McKinnell & Wood, Boston**
- Navarro Baldeweg Asociados, Madrid
- Overland Partners, San Antonio
- Porphyrios Associates, London



AUA 2003
STAR architects





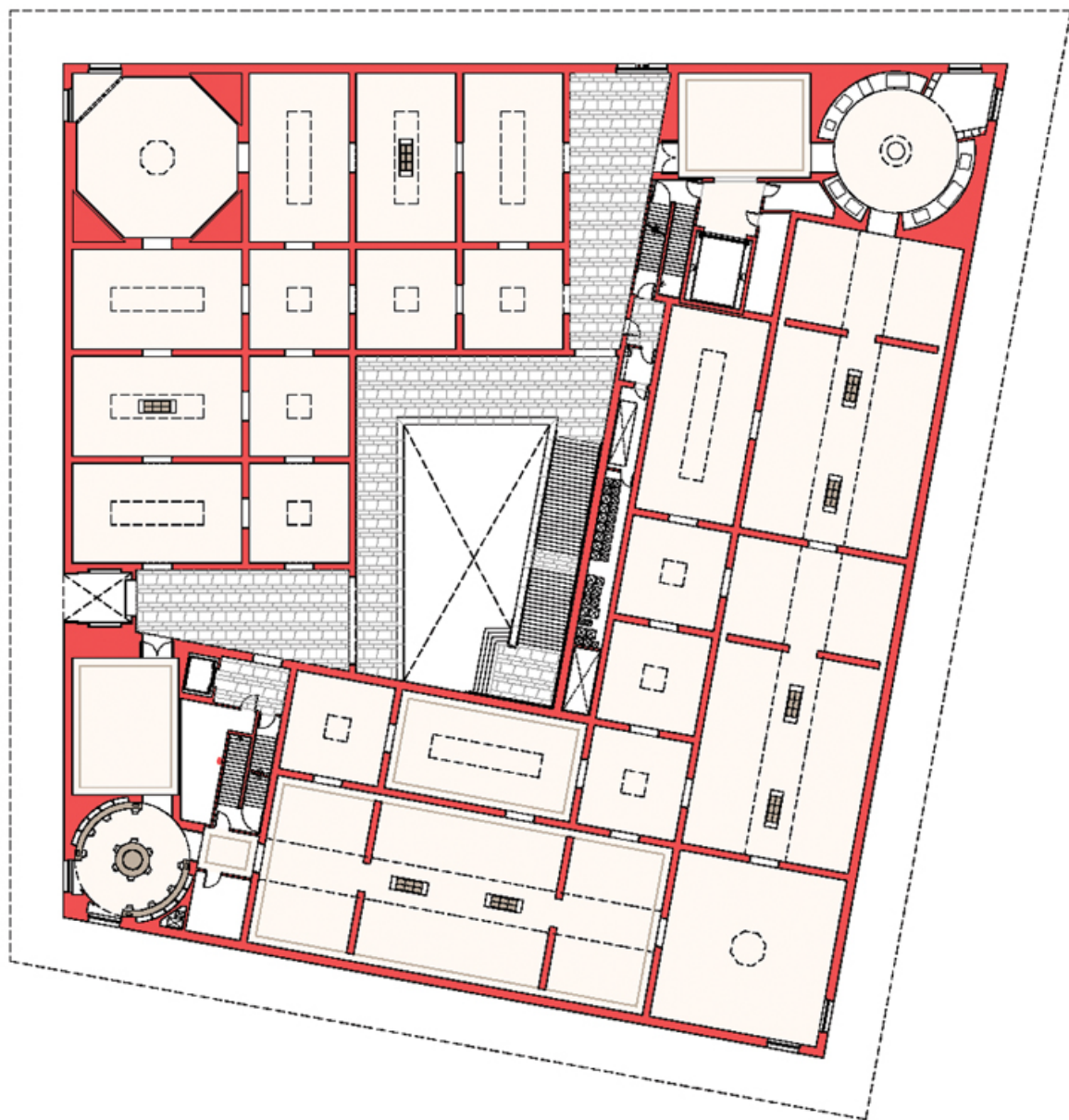
SITE PLAN: MUSEUM PLAZA
GROUND FLOOR PHASE 1 & 2

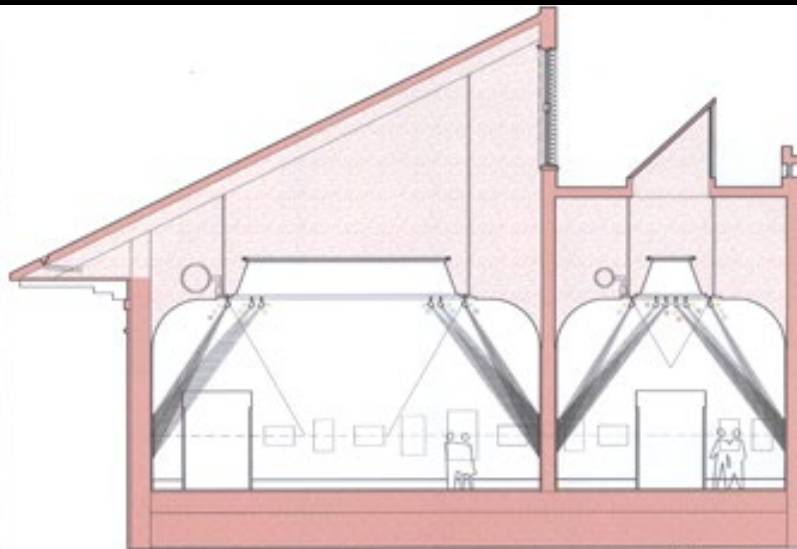
UNIVERSITY of TEXAS at AUSTIN
JACK S. BLANTON MUSEUM OF ART

KALLAMER BLANKENHILL & WISSE ARCHITECTS, PC
BROOKFIELD & COMPANY ARCHITECTS
9 JULY 2013

SCALE: 1" = 20'-0"



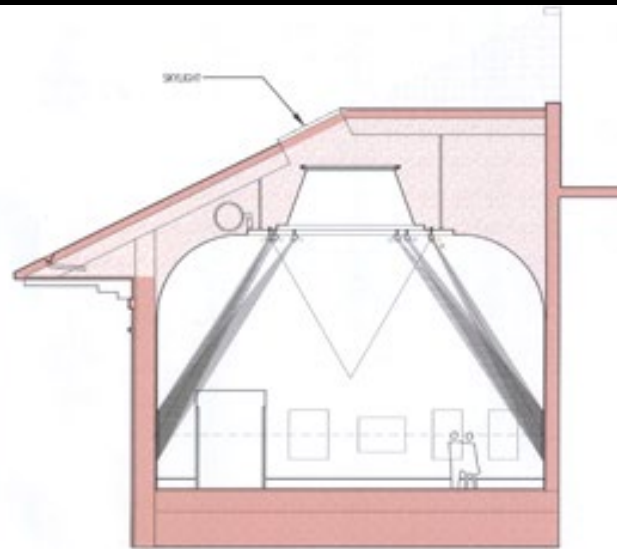




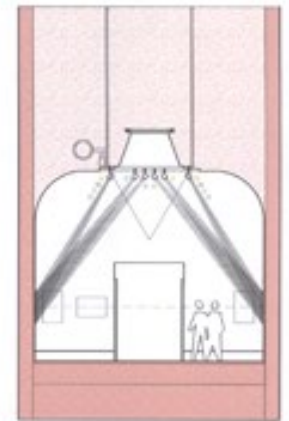
SECTION 1
1/4"=1'-0"

1A

1B

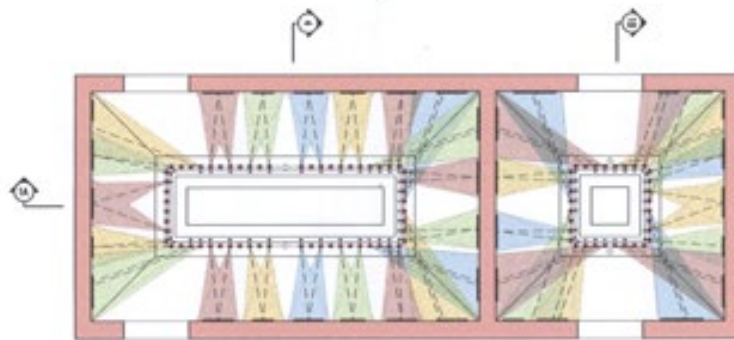


SECTION 5
1/4"=1'-0"



SECTION 4
1/4"=1'-0"

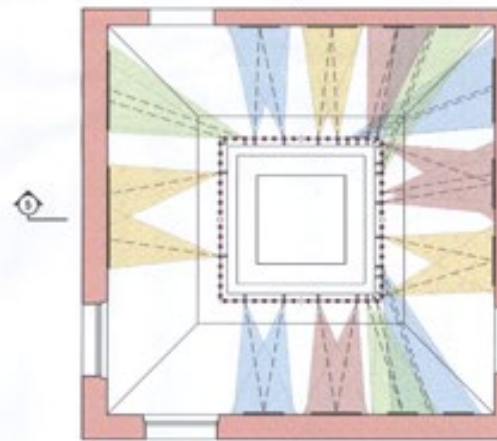
GALLERY LIGHTING STUDY



GALLERY TYPE B

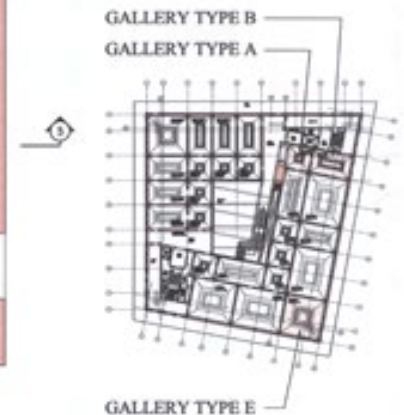
GALLERY TYPE A

REFLECTED CEILING PLAN
1/4"=1'-0" GALLERIES TYPE A & B



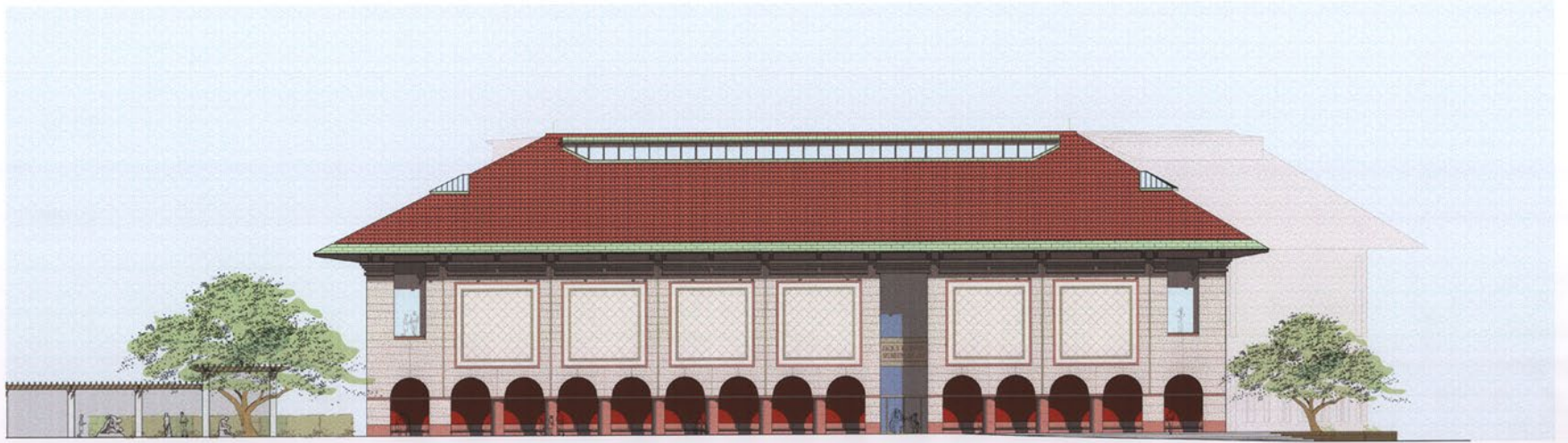
GALLERY TYPE E

REFLECTED CEILING PLANS
1/4"=1'-0" GALLERY TYPE E

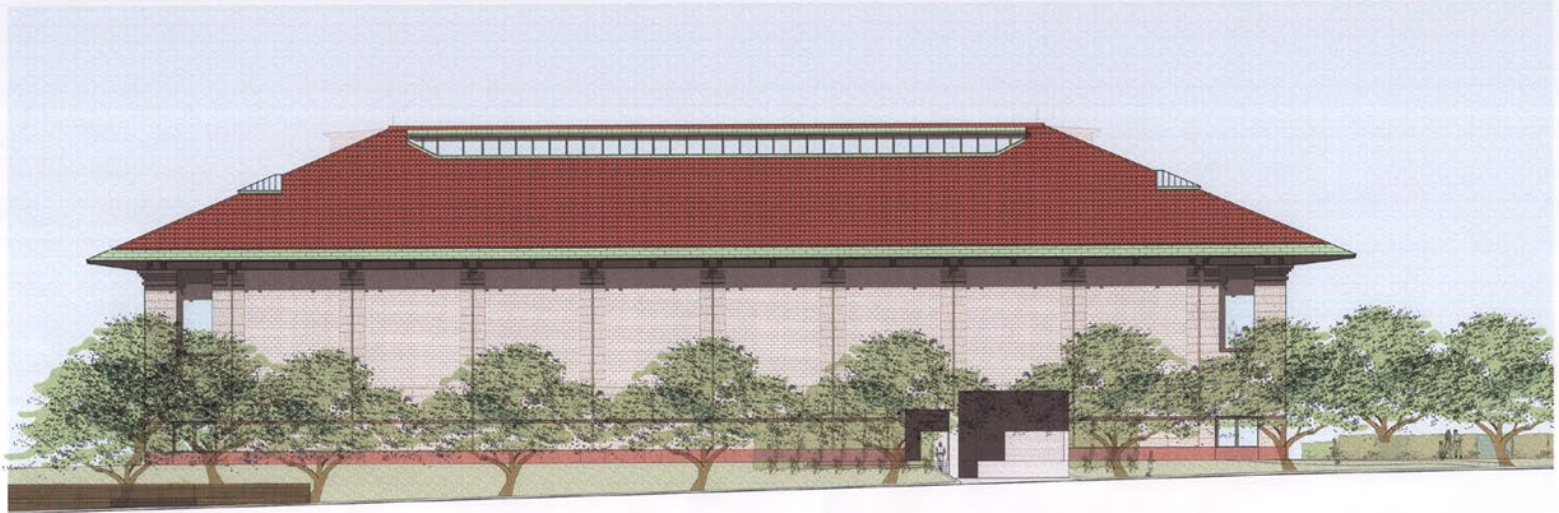


GALLERY TYPE E

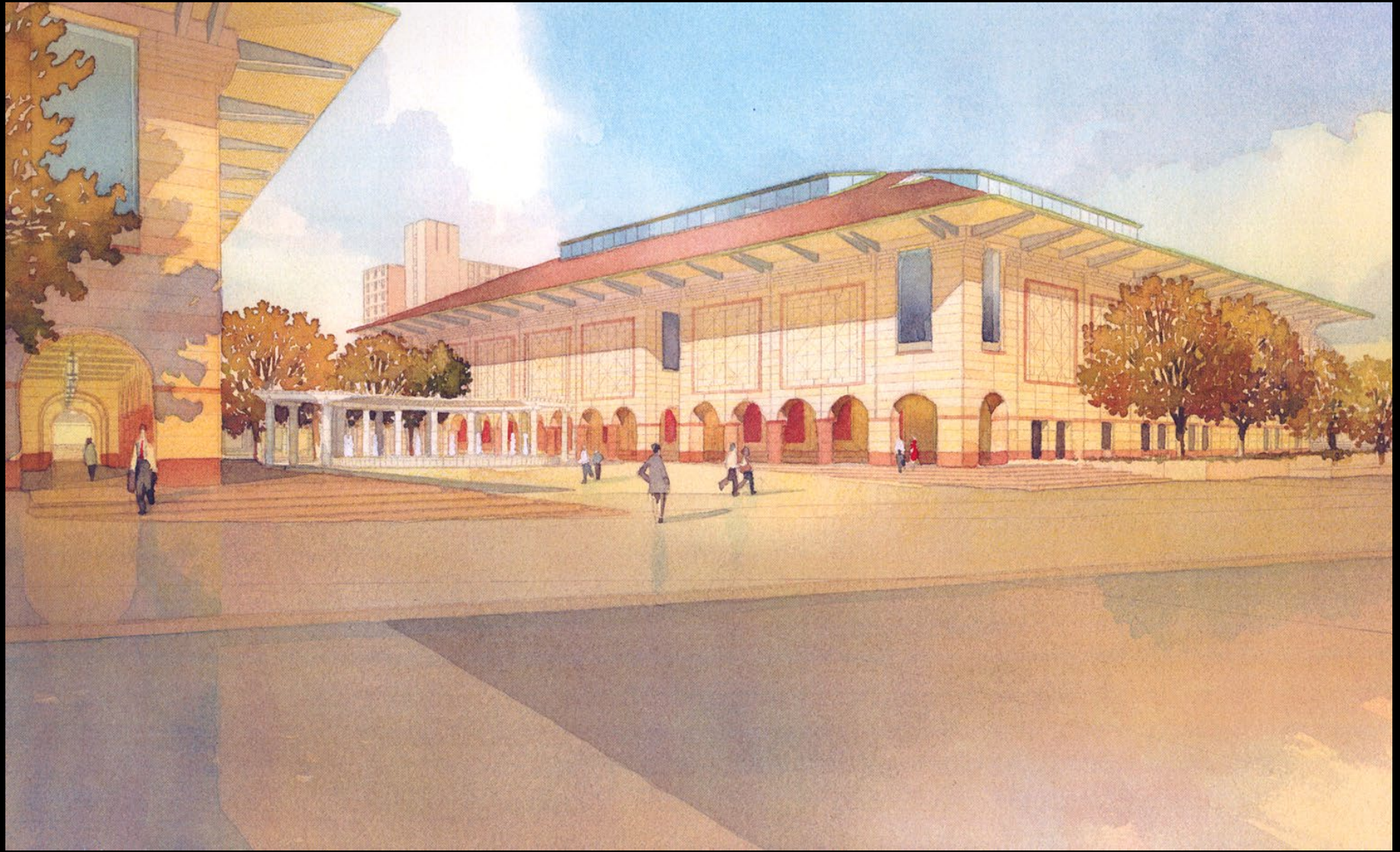
KEY PLAN
1"=40'

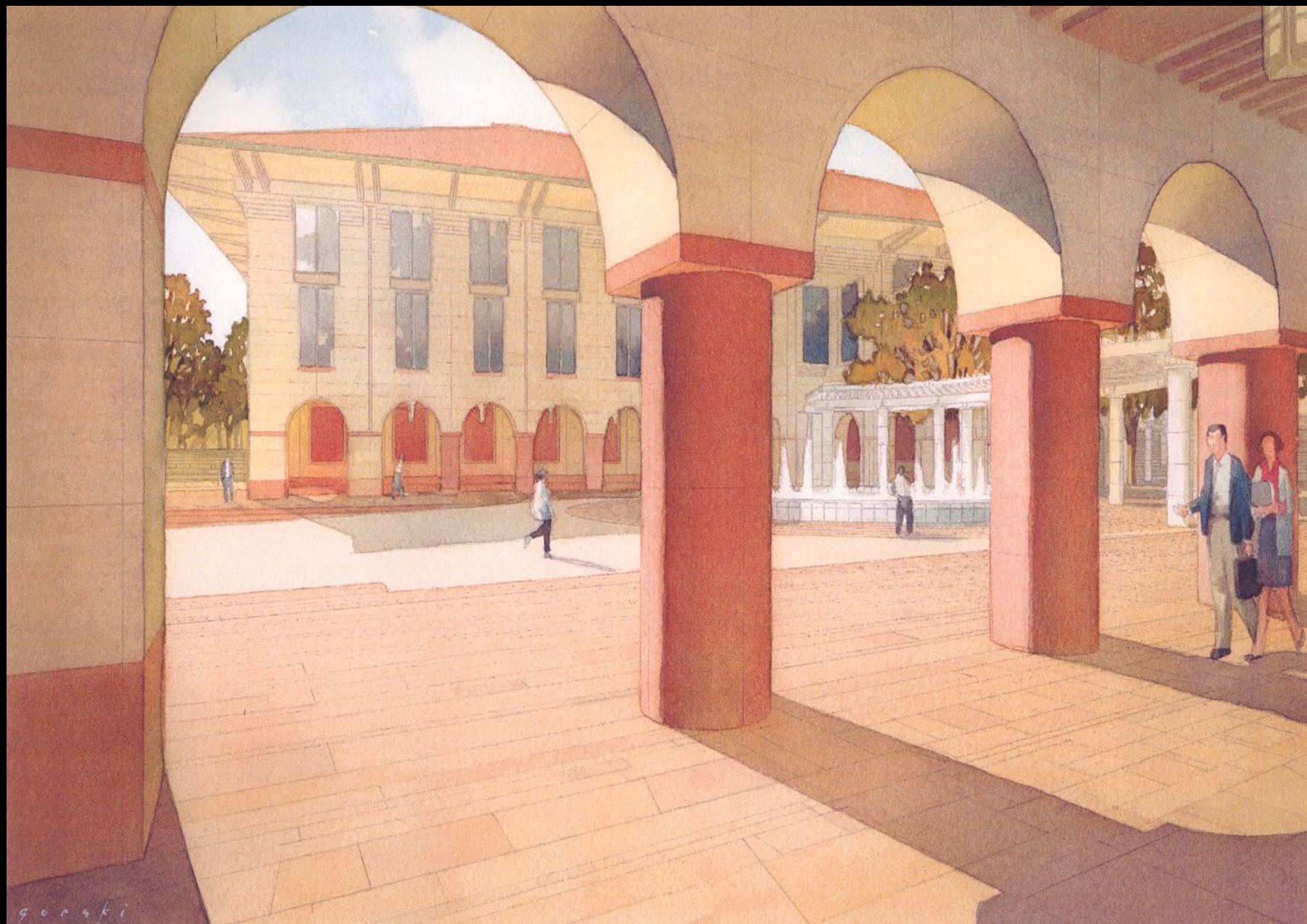


PHASE 1
WEST ELEVATION



PHASE 1
EAST ELEVATION





goraki

How is the selection process different?



AUA 2003
STAR architects



University of Cincinnati MainStreet



AUA 2003
STAR architects



MainStreet Context

- Composition of four buildings and a major urban open space
- Over 1200 feet long – transversing 50 feet of grade change

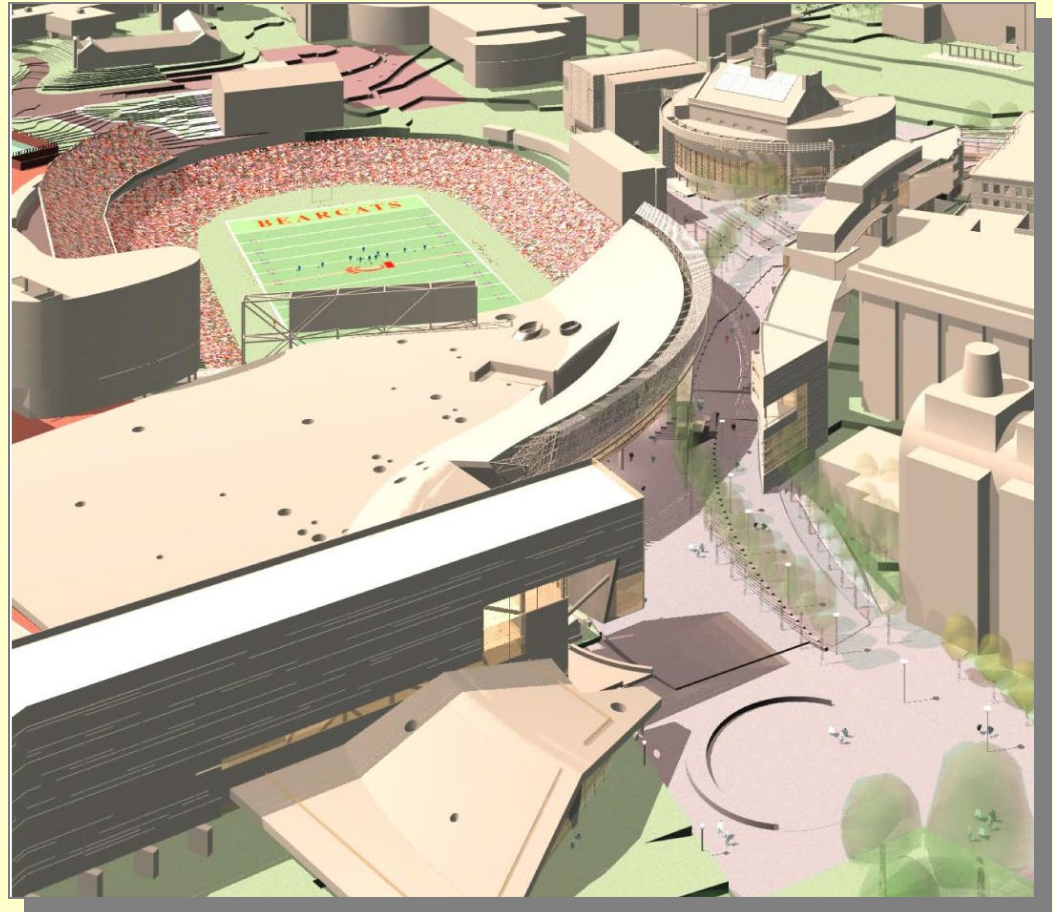


AUA 2003
STAR architects



MainStreet Primary Uses

- Visitor's/OneStop Business Center
- Student Union
- Student Life Center
- Student Recreation Ctr.
- Public Forums/
Entertainment Area



In addition to the primary uses, there is

- Retail/Commercial space
- Deli, coffee and sweets shops
- Gallery
- Student government offices
- Academic classrooms



Composition of Design Teams



- Visitors Center – Leers Weinzapfel/GBBN



AUA 2003
STAR architects



Composition of Design Teams



- Student Union – Gwathmey Siegel/GBBN



AUA 2003
STAR architects



Composition of Design Teams



- Student Life Center – Moore Ruble Yudell/Glaserworks

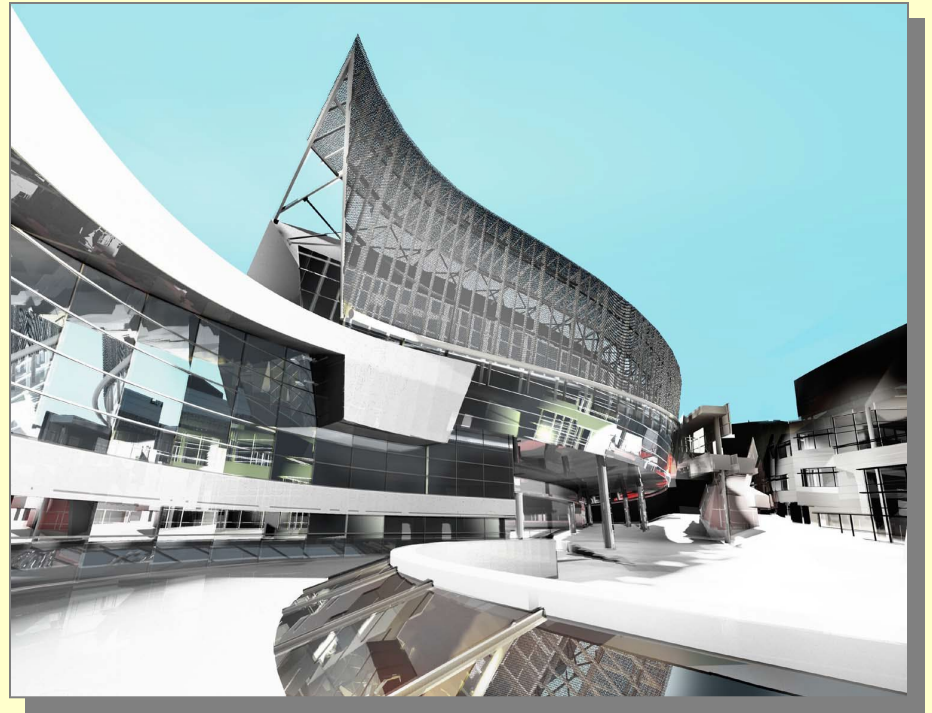
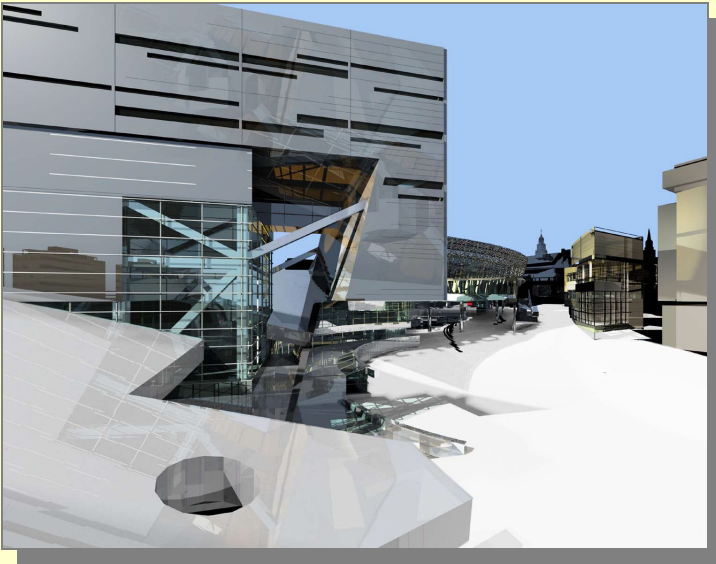


AUA 2003
STAR architects



Composition of Design Teams

- Student Recreation Center – Morphosis/KZF

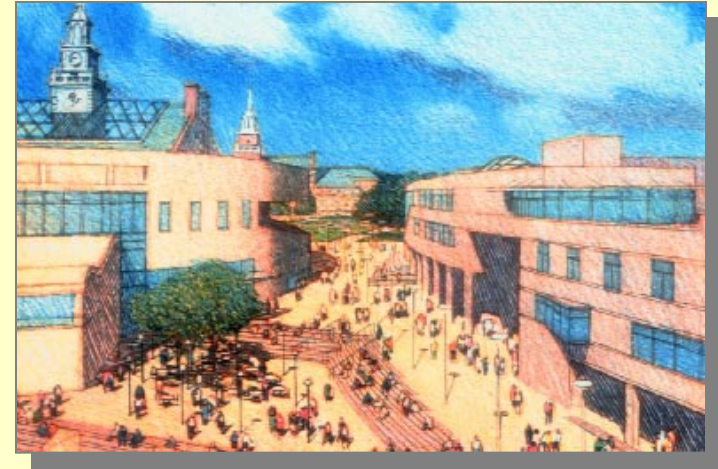


AUA 2003
STAR architects



Composition of Design Teams

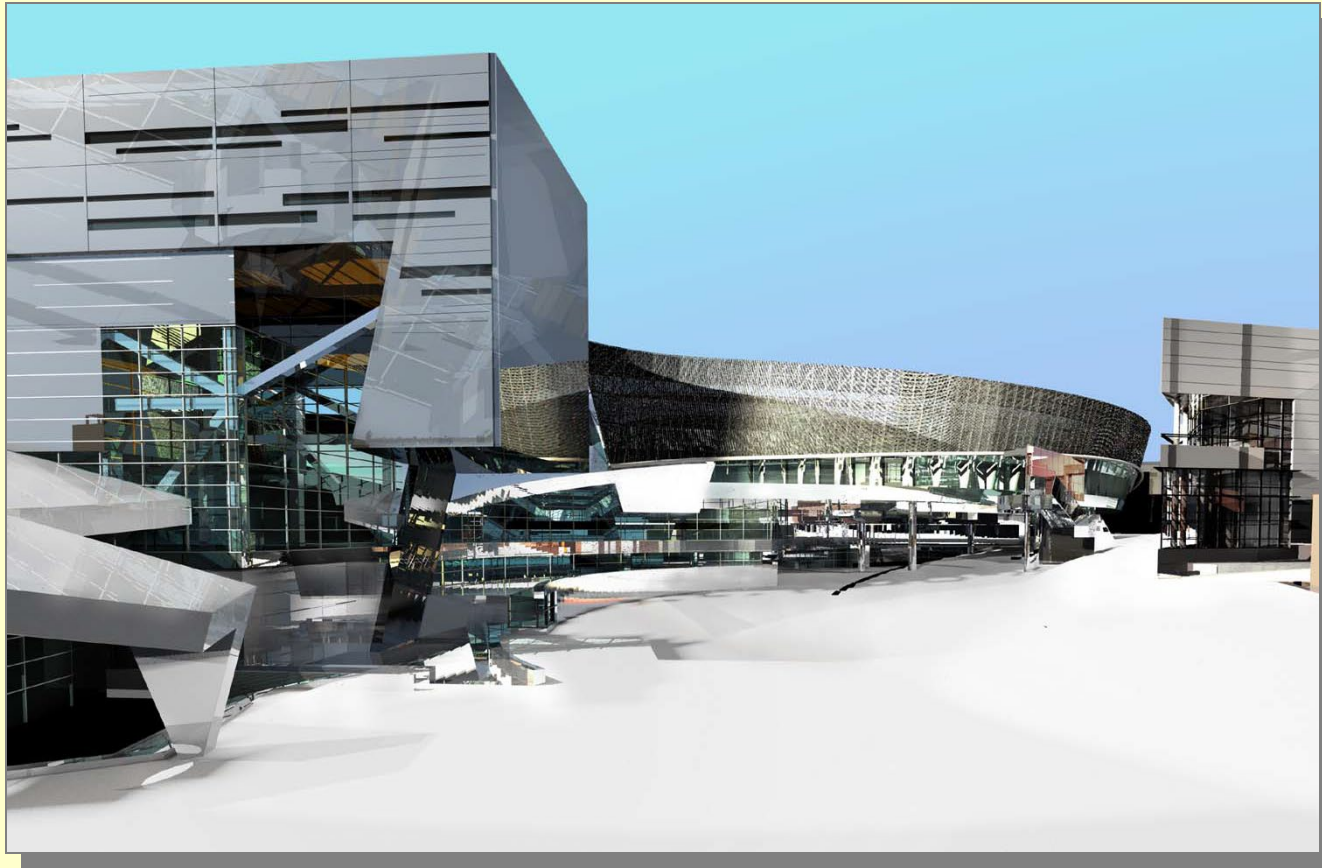
- Open Space/Urban Design – Hargreaves Associates/
Glaserworks



AUA
STAR

Specific Project Program – Student Recreation Center

- \$100,000 million in cost to be completed in Fall 2005

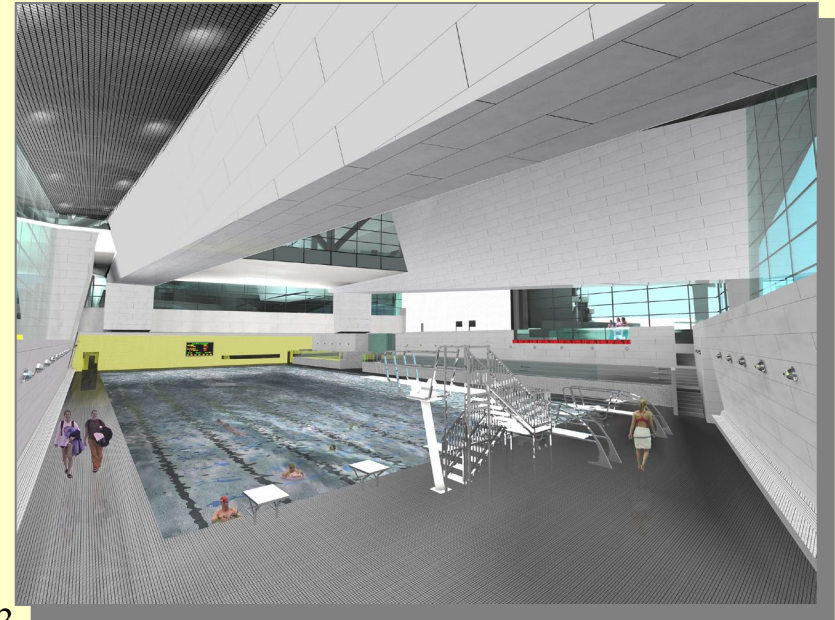


AUA 2003
STAR architects



Specific Project Program – Student Recreation Center

- Leisure pool
- Competition pool
- Gymnasium with six basketball courts
- Fitness Center



AUA 2003

STAR architects

Specific Project Program – Student Recreation Center

- Juice Bar
- Convenience Store
- Marché food/dining area seating 450 people

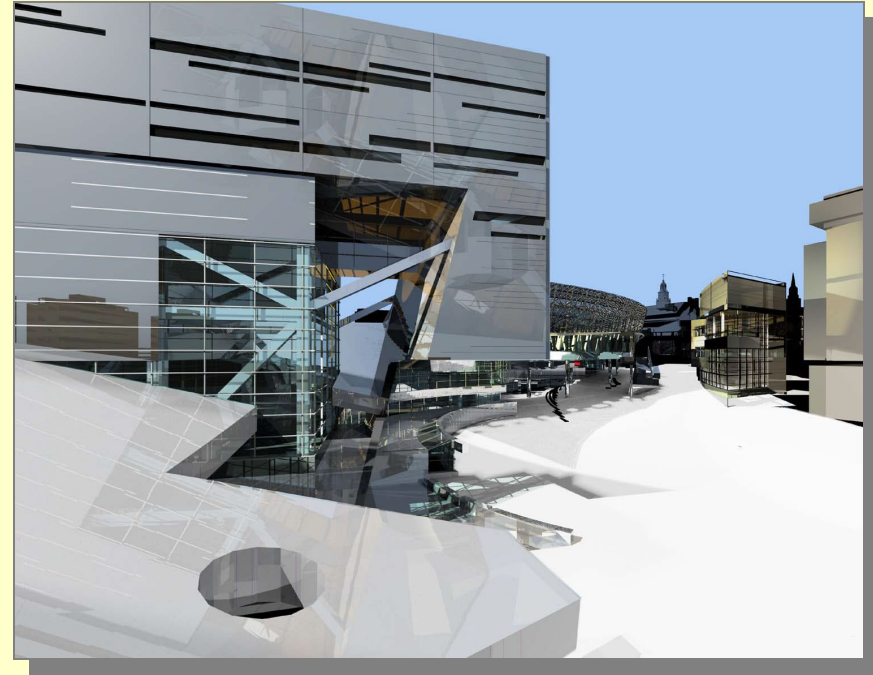
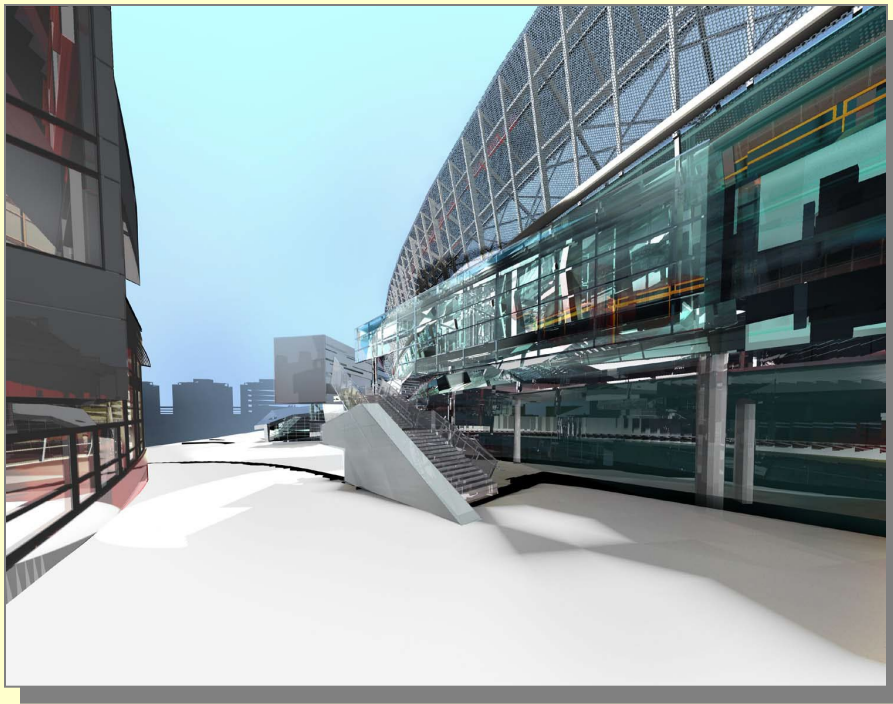


AUA 2003
STAR architects



Specific Project Program – Student Recreation Center

- Student housing with 227 beds
- 6-80 seat high-tech classrooms

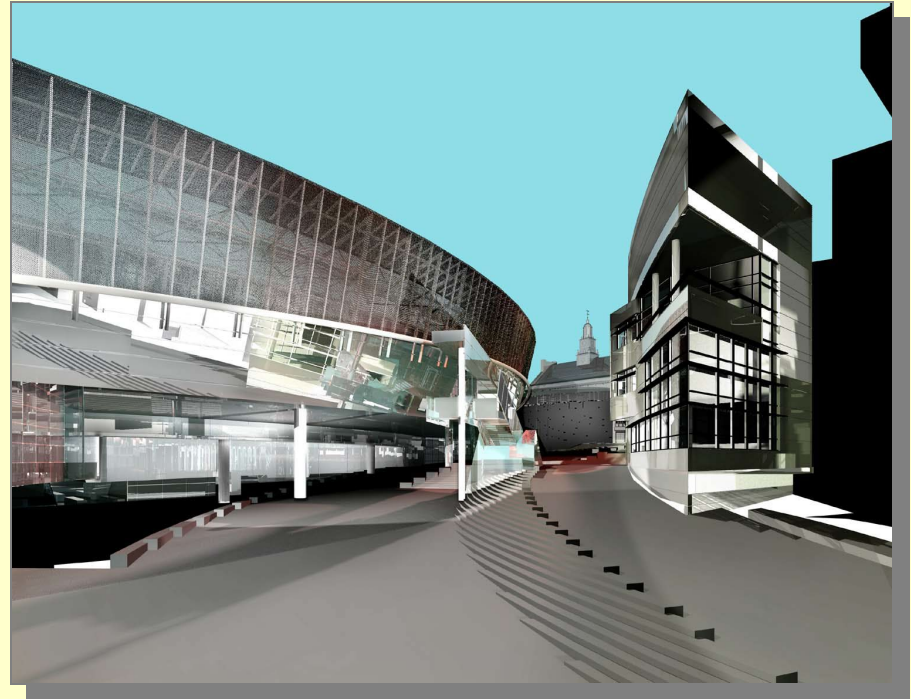
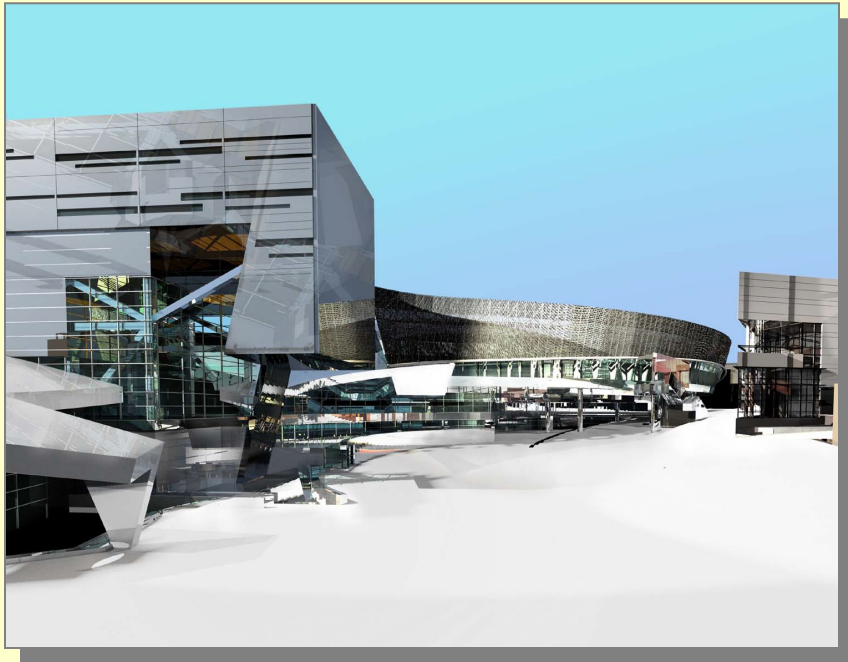


AUA 2003
STAR architects



Specific Design Parameters

- Anchor the east end of MainStreet
- Provide a “welcome hand” to students coming to MainStreet from the East
- Appear to be a very dynamic and energetic building
- Relate to other buildings on MainStreet, but also be different



AUA 2003
STAR architects

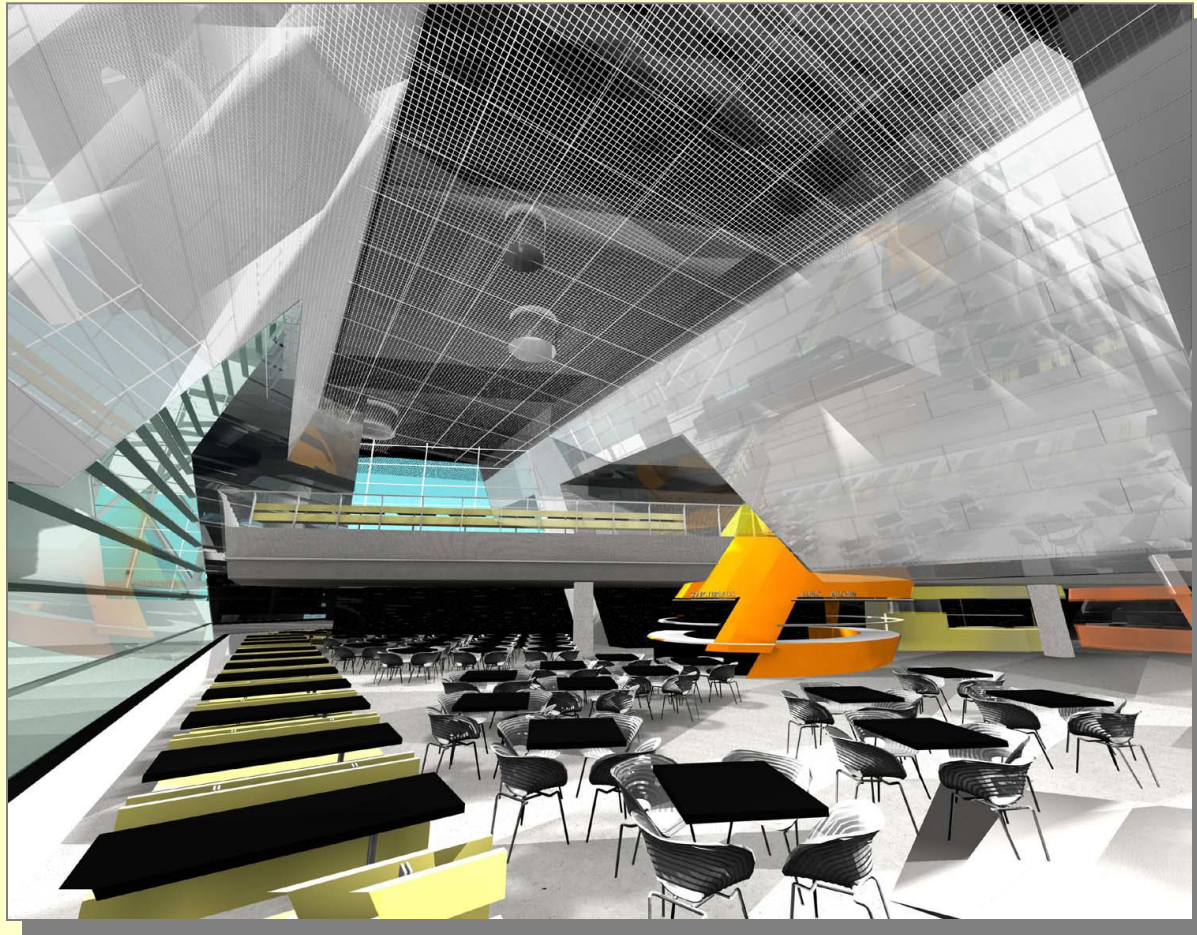


Preparation of CD's

- Adherence to standards
- Control cost – construction and life cycle
- Detail development
- Constraints of special/exotic materials
- How to procure these special materials
- Special specifications



Marketing to Contractors



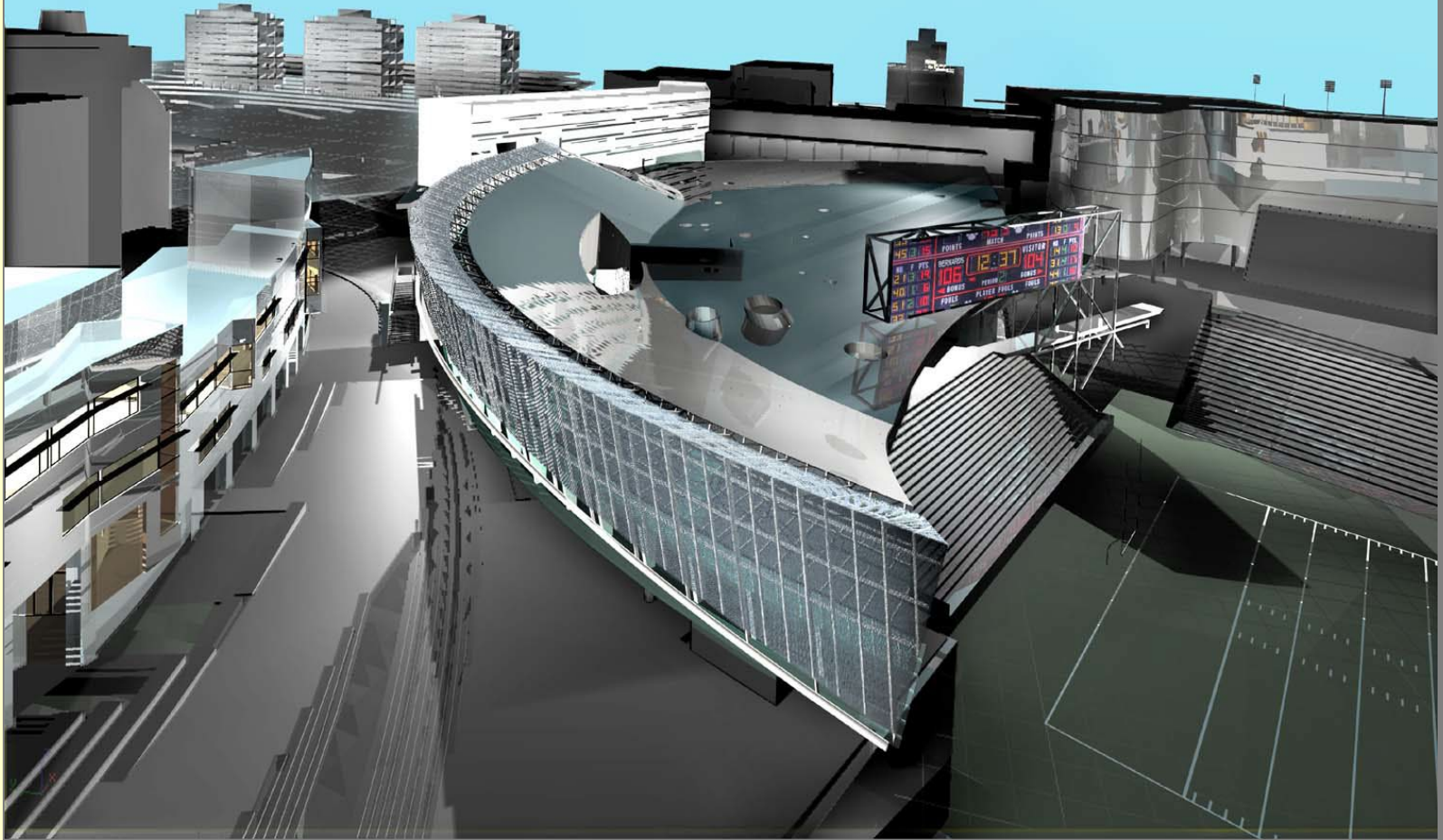
- o Reducing the “fear factor” of bidding



AUA 2003
STAR architects



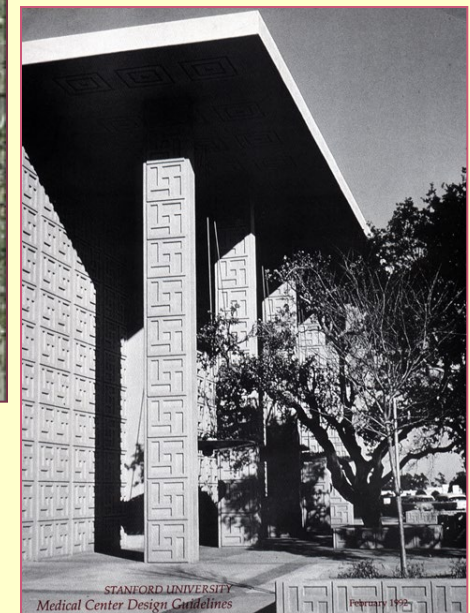
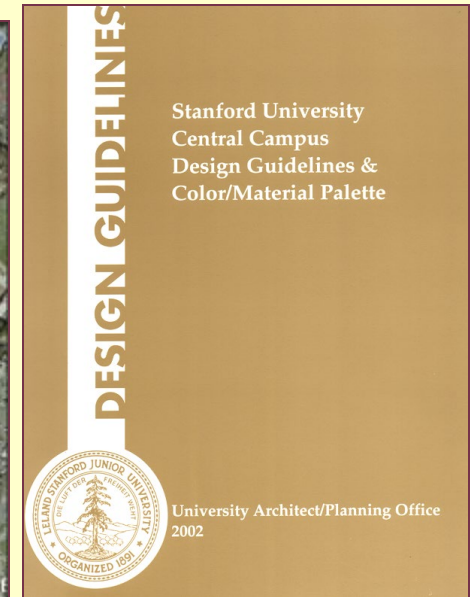
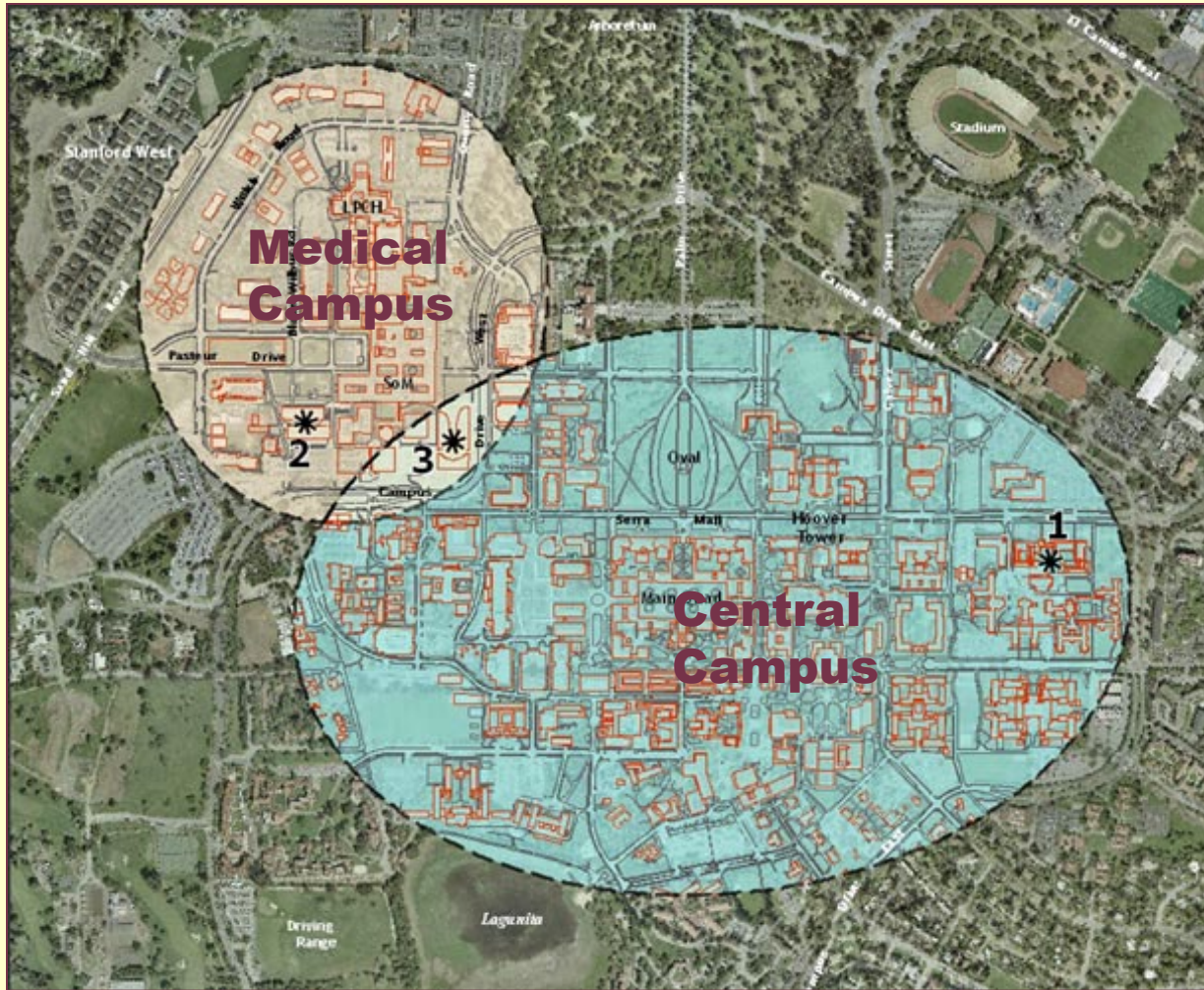
Fruits of our Labor



AUA 2003
STAR architects



Stanford University: A Tale of Two Campuses and Two Design Guidelines



* Site of recent project by international architects

AUA Presentation, 2003



AUA 2003
STAR architects

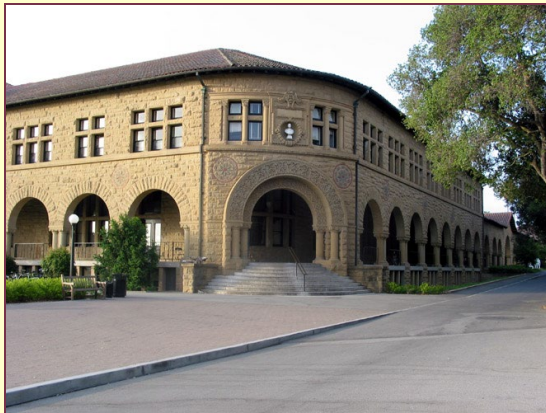


Stanford's Two Campuses: Strong Images from "Star" Designers

CENTRAL CAMPUS



Palm Drive Entry



Shepley Rutan Coolidge w/
Frederick Law Olmsted



AUA 2003
STAR architects

MEDICAL CAMPUS



Pasteur Drive Entry

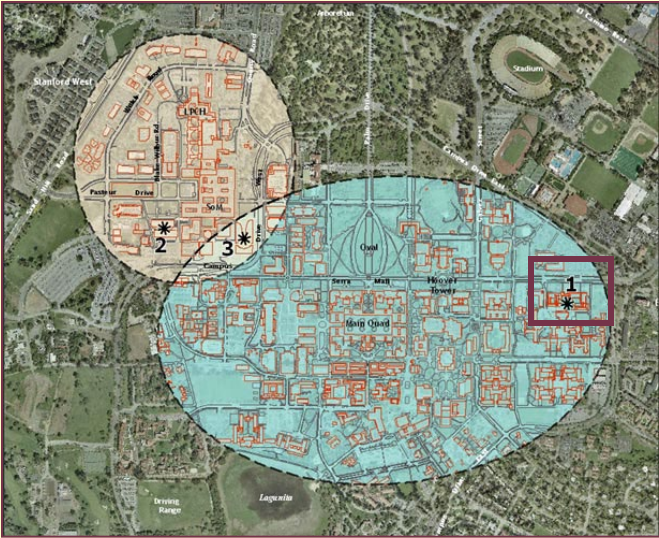


Edward Durell Stone w/
Thomas Church

Stanford Central Campus: Schwab Residential Center, 1997

Architects: Legorreta Arquitectos, The Steinberg Group

Landscape Architects: Peter Walker and Partners

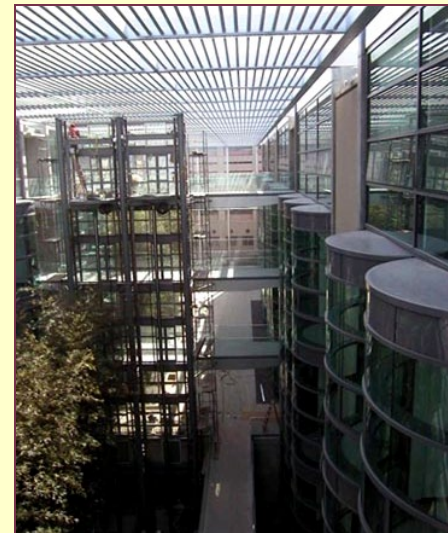
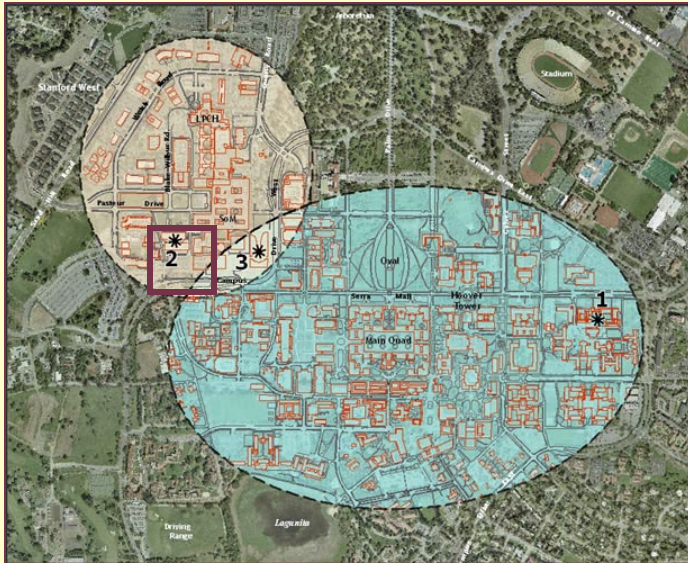


AUA 2003
STAR architects

Stanford Medical Campus: Center for Clinical Sciences Research, 2000

Architects: Lord Norman Foster and Partners; Fong and Chan

Landscape Architects: Peter Walker and Partners

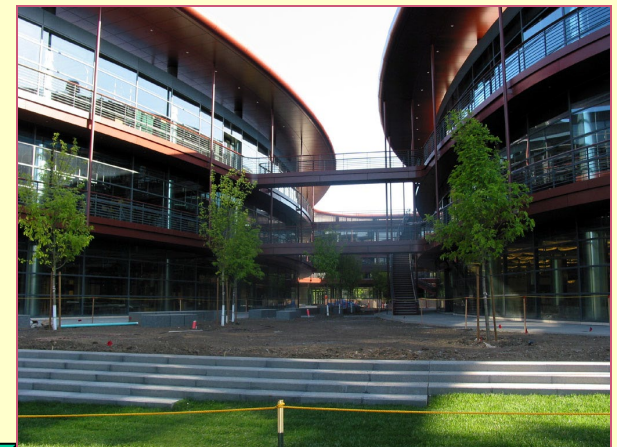
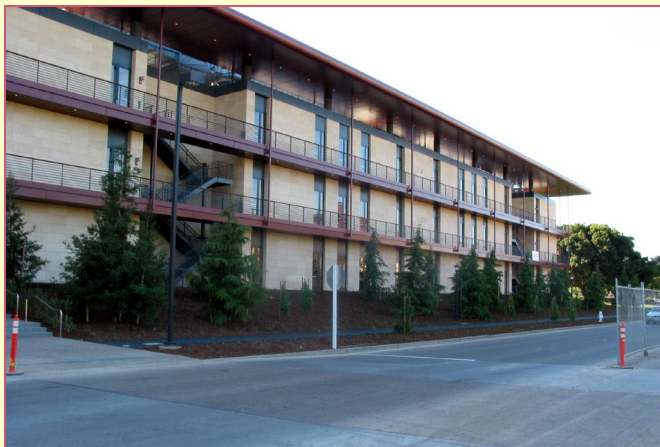
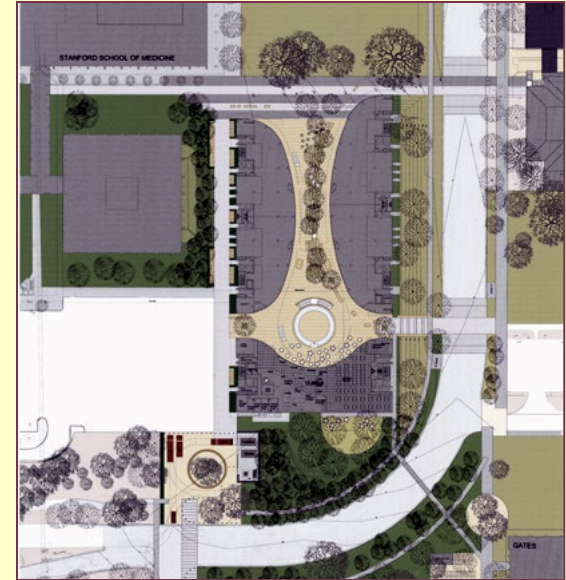
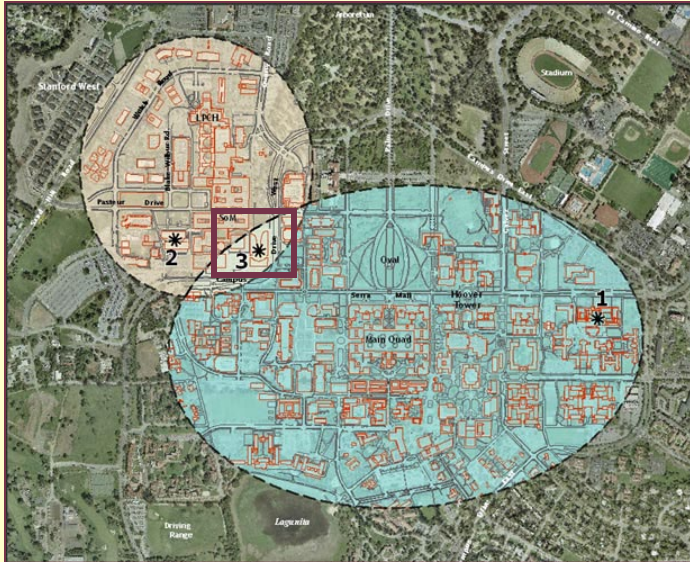


★ AUA 2003
STAR architects ★

Linking Two Campuses: Clark Center for Bioengineering & Biosciences, 2003

Architects: Lord Norman Foster and Partners; MBT Architecture

Landscape Architects: Peter Walker and Partners



AUA 2003
STAR architects

